

# *Wellington Garden Club*

*Wellington, Florida*

*2019-2020 Yearbook*



*Member of Florida Federation of Garden Clubs*

# Blue Star Memorial Marker

*Sponsored by*

*Wellington Garden Club*

Dedication on November 11, 2019



*Save the date:* **Monday, November 11, 2019**

*Where:* Veterans Park – Wellington

*Time:* Parade begins at 8:15am

Ceremony begins at 8:30am

Please come and join us as we honor all current and former members of the armed forces.

Founded 1981



Federated 1982

## 2019-2020 Yearbook

### Mission

To further the education of the members and the public in the fields of gardening, horticulture, botany, floral design, landscape design, environmental awareness through the conservation of natural resources, civic beautification, nature studies, and to instill in our youth the love of gardening and the respect and protection of the environment.

### Motto

Gardening Makes a World of Difference

### Logo Flower

Allamanda *Allamanda cathartica*

### Member of:

National Garden Clubs, Inc.  
Deep South Region  
Florida Federation of Garden Clubs  
District X  
Mounts Botanical Garden  
Wellington Chamber of Commerce

### Membership: 129

### Meets the first Monday of each month,

September through May at 9:30 am  
Wellington Community Center  
12150 Forest Hill Blvd  
Wellington, Florida 33414

[www.wellingtongardenclub.org](http://www.wellingtongardenclub.org)

Email: [info@wellingtongardenclub.org](mailto:info@wellingtongardenclub.org)

Wellington Garden Club is a 501 (c)(3) organization. WGC is open to all regardless of race, color, national origin, religion, ancestry, sex, age, marital status, sexual orientation or disability.

## TABLE OF CONTENTS

Title Page, Logo, Mission, Motto, Membership	1
Table of Contents	2
President's Message	3
Board of Directors, Executive Committee Officers, Committees and Chairs, Yearbook Acknowledgments	4-5
Former Presidents and Honors	6
National, Regional, State and District Board Members	7
Judges, Instructors, Consultants	7
Schedule of Programs/Events 2019-2020	8-9
Annual Dues Notice, Meetings Summary, Carpool Locations, Payment Policy	10
NGC Schools, Clubs, Councils and Societies at Mounts Botanical Garden	11
NGC and Wekiva Conservation Pledges	11
Meeting Speakers and Around & Abouts	12-19
Membership List	20-30
In Memoriam	31
Ongoing Projects	32-33
Wellington Garden Club Awards	34
National, Regional, State, and District Information	35
Articles of Association	36-45
Policies	46-51
Donations to the Wellington Library	52



## President's Message

I am looking forward to our 2019-2020 Wellington Garden Club year. We have been busy planning an informative, interesting and fun year. Terrienne Tuskes has planned some amazing Around and Abouts for us. I hope you will be as excited as I am to participate. You will be so impressed by the speakers that John Siena has lined up.

We are having an NGC Petite Standard Flower Show in February at the Mall at Wellington Green entitled "It's a Small World" that is going to be an exciting event. We will also offer several great workshops for your participation.

I want to encourage all of you to join a committee, work on projects, and help out where you can. We have many mentors to help and guide you if you would like to chair a committee.

In keeping with Carol Coleman's District X theme of "Bulbs and seeds may create our garden but youth makes them grow", my theme for the next two years is "Plant ideas and grow the seeds of youth". Continuing with these themes, I would like to see more volunteers helping out in our many Youth Garden Clubs. Let us plant the seeds of conservation, ecology, and horticulture in our youth as they are our future earth stewards.

*Jan Seagrave*

President 2019-2021

# WELLINGTON GARDEN CLUB 2019-2020

## BOARD OF DIRECTORS

### OFFICERS

President	Jan Seagrave
First Vice President	Maria Wolfe
Second Vice President	John Siena
Treasurer	Danese Sloan-Kendall
Assistant Treasurer	Kathy Hernicz
Recording Secretary	Carol Ralph
Corresponding Secretary	Kate Kouba
Parliamentarian	Kathy Schneider
Former President <i>ex-officio</i>	Carol Coleman

### COMMITTEES/CHAIRS BY GROUP

#### CIVIC/COMMUNITY SERVICE

Adopt-a-Street	Kay Brown & Jim Thompson
Community Gardens	John & Kathy Siena
Earth Day	Larry Grosser
Petite Flower Show	Twig Morris & Carol Lazzarino
Habitat for Humanity	Lisa Ferrano
National Garden Week	Twig Morris

#### COMMUNICATION

External Events Liaison	Carol Coleman
Facebook	Kathy Siena
Historian	Deb Russell
Membership	Alison Albury
Membership Data	Barbara Ricksen
Mentoring	Adele Rubin
Newsletter	Tina Richter Becker
Publicity	Open
Website Liaison	Carol Ralph
Yearbook Preparation	Carol Ralph, Jan Seagrave, Maria Wolfe

## COMMITTEES/CHAIRS BY GROUP

(Continued)

### EDUCATION

Around & Abouts	Terrienne Tuskes
Awards	Twig Morris
College Scholarships	John Siena
Environmental Education	Diane Rice
Garden Art Workshops	Carol Lazzarino & Dee Rolfe
Member Education Expense	
Reimbursement	Evvy Bartley
FFGC SEEK	Lisa Ferrano
FFGC Wekiva Leadership Training	Stormi Bivin
FFGC Wekiva Youth Camp	Harriet Samuels
Youth Contests	Janet Stein
Youth Garden Clubs	Kathy Siena
Binks Forest Elementary	Kathy Schneider-WGC Liaison
Girl Scout Troop 22222	Kathy Siena-WGC Liaison
Palm Beach Central High	Lisa Ferrano-WGC Liaison
Pine Jog Elementary	Twig Morris-WGC Liaison
Wellington High School	Roxanne Henry-WGC Liaison
Wynnebrook Elementary	Tim Hadsell/Janet Stein-WGC Liaisons

### GARDENING

Horticulture/Design	Linda DeSanti
Meeting Plant Raffle	JoAnn Akins
Plant Sales	Open
Wellington Preserve Landscaping	Kate Kouba

### SOCIAL EVENTS

Hospitality	Maxine Fisher
Luncheon-Holiday	Carol Coleman, Bobbie Ziegler, Barbara Zenker
Luncheon-Spring	Open

### YEARBOOK ACKNOWLEDGMENTS

Cover Photo	Joan Kaplan
Inside & Back Cover Graphics	Chris Biscoglio
Editing	Stormi Bivin, Twig Morris, Carol Ralph, Jan Seagrave

## FORMER PRESIDENTS

Mary Clark	1982-86	Mary Ann Klein	2002-04
Mary Elizabeth Ritter	1986-88	Susan Vance	2004-06
Muriel Fischer	1988-89	Linda Leemon	2006-07
Dorothy Cordell	1990-91	Stormi Bivin	2007-09
Ruth McWhorter	1992	Barbara Hadsell	2009-11
Mary Elizabeth Ritter	1992-94	Susan Hillson	2011-13
Paula Giambrone	1994-96	Twig Morris	2013-15
Clare Peckinpaugh	1996-98	Kathy Siena	2015-17
Donna Fernandez	1998-00	Carol Coleman	2017-19
Doris Courtney	2000-02		

## HONORS

### Life Memberships:

NGC	Barbara Hadsell	Barbara May
Deep South Region	Barbara Hadsell	
FFGC	Barbara Hadsell	Barbara May
FFGC/WGC	Stormi Bivin	Mary Ellen Chestnut
	Donna Fernandez	Susan Hillson
	Twig Morris	Clare Peckinpaugh
	Kathy Siena	Lily Wiggan

**WGC Charter Member:** Lily Wiggan

**FFGC Hall of Fame:** Barbara Hadsell                      Lily Wiggan

### FFGC Pillar of Pride Awards:

Stormi Bivin	Mary Ellen Chestnut	Linda DeSanti
Barbara Hadsell	Susan Hillson	Joan Kaplan
Twig Morris	Suzanne Rares	Judy Schweitzer
Elizabeth Stevens	Susan Vance	Carol Coleman

### Earth Steward Recognition:

Lisa Ferrano	Barbara Hadsell	Tim Hadsell
Brian Hopper	Peggy Jacobs	Kate Kouba
Diane Rice		

### Florida Master Gardeners:

Uma Bhatti	Stormi Bivin	Nancy Cinieri
Linda DeSanti	Mary Drexler	Larry Grosser
Barbara Hadsell	Ann Hlasnicsek	Joan Kaplan
Cheryl Karlo	Carol Lazzarino	Sandy Sklar
Danese Sloan-Kendall	Barbara Zenker	Bobbi Ziegler





## NATIONAL, REGIONAL, STATE AND DISTRICT BOARD MEMBERS

<b>National Garden Clubs Board</b>	Barbara Hadsell	Barbara May
	Jan Warshauer	
<b>Deep South Region Board</b>	Barbara Hadsell	
<b>FFGC Board</b>	Barbara Hadsell	Barbara May
	Kathy Siena	
<b>District X Board</b>	Stormi Bivin	Barbara Hadsell
	Kimberly Helms	Twig Morris
	Carol Ralph	Diane Rice
	Deb Russell	



## JUDGES, INSTRUCTORS, CONSULTANTS

### NGC Flower Show Judges

Emeritus Judge	Mary Ellen Chestnut
Accredited Master Judges	Barbara May Jan Warshauer Christine Biscoglio
Accredited Life Judge	Susan Hillson
Accredited Judges	Twig Morris Edith Izaguirre Guerrero

### NGC Flower Show School Instructor

Barbara May

### NGC Landscape Design Consultants

Barbara Hadsell    Susan Hillson  
Barbara May        Barbara Zenker  
Bobbi Ziegler

### NCG Landscape Design Master Consultant

Barbara Hadsell

### NGC/FFGC Environmental Consultant

Barbara Hadsell

### NCG/FFGC Gardening Master Consultant

Barbara Hadsell

### NCG/FFGC Gardening Schools Chair

Barbara Hadsell

### FFGC Floral Design Study Instructors

Christine Biscoglio  
Susan Hillson

### FFGC Flower Show Consultant

Barbara May

### District X Judges Council Vice Director

Susan Hillson

### FFGC Flower Show Schools Chair

Susan Hillson

### NGC Flower Show Schools Chair

Jan Warshauer

## SCHEDULE OF PROGRAMS/EVENTS

2019

### AUGUST

Aug 28, *Wed* WGC Board Meeting-Wellington Community Center (9:30AM)

### SEPTEMBER

Sep 3, *Tues* Garden Club Meeting-Wellington Community Center (9:30AM)

Sep 11-12, *Wed* FFGC Fall Board Meeting-FFGC Headquarters (*Wed-Thurs*)

Sep 21, *Sat* Coastal Cleanup & Cookout-McArthur Park, No Palm Beach  
(8:00AM-11:00AM)

Sep 19, *Thurs* Around & About-Port St Lucie Botanical Gardens (11:00AM)

Sep 18-20, *Wed* NGC Fall Board Meeting, St. Louis, MO (*Wed-Fri*)

Sep 26, *Thurs* District X Lunch & Learn, Pipers Landing Clubhouse, Palm City

Sep 28, *Sat* Tree Planting-Wellington Env. Preserve, Wellington (8:30AM)

### OCTOBER

Oct 2, *Wed* WGC Board Meeting-Wellington Community Center (9:30AM)

Oct 7, *Mon* Garden Club Meeting-Wellington Community Center (9:30AM)

Oct 8, *Tues* Adopt-a-Street-Wellington Dog Park (9:00AM)

Oct 17, *Thurs* Dist X Fall Mtg, Vero Beach 9:00AM)

Oct 24, *Thurs* Around & About-Pan's Gardens, Palm Beach (10:15AM)

Oct 27-29, *Sun* Fall Symposium, FFGC Headquarters, Winter Park, (*Sun-Tues*)

Oct 30, *Wed* WGC Board Meeting-Wellington Community Center (9:30AM)

### NOVEMBER

Nov 4, *Mon* Garden Club Meeting-Wellington Community Center (9:30AM)

Nov 7, *Thurs* Garden Art Workshop-Fire Station 30 (9:00AM-1:00PM)

Nov 9, *Sat* Hunchback of Notre Dame, The Kings Academy (1:00 PM)

Nov 11, *Mon* Blue Star Memorial Marker Dedication (8:30AM)

Nov 14, *Thurs* Around & About-McCarthy's Wildlife, Loxahatchee (11:00AM)

Nov 16, *Sat* Petite Design Class, Location TBD (10:00AM)

Nov 21-22, *Thurs* NGC Gardening School, West Palm Beach (*Thurs-Fri*)

Nov 25, *Mon* WGC Board Meeting-Community Center (9:30AM)

### DECEMBER

Dec 2, *Mon* Holiday Luncheon, International Polo Club (11:00AM-2:00PM)

Dec 3, *Tues* Adopt-a-Street-Wellington Dog Park (9:00AM)

Dec 5, *Thurs* Awards Judged, FFGC Headquarters, Winter Park

Dec 7, *Sat* Petite Design Class, Location TBD(10:00AM)

Dec 13, *Fri* Around & About-Ann Norton Museum & Sculpture Gardens  
(10:30AM)

Dec 30, *Mon* WGC Board Meeting-Community Center (9:30AM)

Go to [www.districtx.org](http://www.districtx.org) for more info on District X events including details on many more NGC/FFGC Courses (Yearbook Page 11).

Go to <http://gardenclub.org/> for more general information about NGC schools.

## SCHEDULE OF PROGRAMS/EVENTS

2020

### JANUARY

- Jan 6, *Mon* Garden Club Meeting-Wellington Community Center (9:30AM)  
Jan 8-9, *Wed* FFGC Winter 2020 Bd Mtg, FFGC Headquarters, (*Wed-Thurs*)  
Jan 11, *Sat* Petite Design Class (9:30AM-12Noon), Location TBD  
Jan 16, *Thurs* Around & About-Raisin' Cane Sugarcane Harvest Tour  
Jan 17, *Fri* Florida Arbor Day  
Jan 22-23, *Wed* FFGC/District X 64th Annual Tropical Short Course, Tri-Refresher,  
Mounts Botanical Garden (*Wed-Thurs*)  
Jan 29, *Wed* WGC Board Meeting-Wellington Community Center (9:30AM)

### FEBRUARY

- Feb 1, *Sat* Jekyll & Hyde, The Musical, The Kings Academy (1:00 PM)  
Feb 3, *Mon* Garden Club Meeting-Wellington Community Center (9:30AM)  
Feb 4, *Tues* Adopt-a-Street-Wellington Dog Park (9:00AM)  
Feb 6, *Thurs* Garden Art Workshop-Fire Station 30 (9:00AM-1:00PM)  
Feb 7-9, *Fri* Wekiva Leadership Training-Apopka (*Fri-Sun*)  
Feb 9, *Sun* Wekiva Youth Camp Open House, Apopka (11:30AM-1:00PM)  
Feb 15, *Sat* Petite Design Class, Location TBD (10:00AM)  
Feb 20, *Thurs* Around & About-Loggerhead Marinelife Center, Juno Beach  
(12:00 Noon)  
Feb 22, *Sat* Paper Shredding Event, Wellington Community Center  
Feb 24-25, *Mon* NGC Gardening School, West Palm Beach (8:30AM-3:30PM)  
Feb 26, *Wed* WGC Board Meeting-Wellington Community Center (9:30AM)  
Feb 29, *Sat* NGC Petite Standard Flower Show, Wellington Green Mall

### MARCH

- Mar 1, *Sun* NGC Petite Standard Flower Show, Wellington Green Mall  
Mar 2, *Mon* Garden Club Meeting -Wellington Community Center (9:30AM)  
Mar 7, *Sat* Cinderella, The Kings Academy (1:00 PM)  
Mar 20, *Fri* Around & About-Norton Museum of Art (10:00AM)

### APRIL

- Apr 1, *Wed* WGC Board Meeting -Wellington Community Center (9:30AM)  
Apr 6, *Mon* Garden Club Meeting -Wellington Community Center (9:30AM)  
Apr 7 *Tues* Adopt-a-Street-Wellington Dog Park (9:00AM)  
Apr 13-16, *Mon* Deep South Convention-Tampa (*Mon-Thurs*)  
Apr 16-19, *Thurs* FFGC Convention, Tampa (*Thurs-Sun*)  
Apr 16, *Thurs* Around & About-River Lilly Cruise, Port St. Lucie (11:00AM)  
*Date TBD* District X Spring Meeting-FL (8:30AM-3:30PM)  
Apr 25, *Sat* Earth Day-Wellington Amphitheater (time TBD)  
Apr 25, *Sat* Phantom of the Opera, The Kings Academy (1:00 PM)  
Apr 29, *Wed* WGC Board Meeting -Wellington Community Center (9:30AM)

### MAY-JUNE

- May 2, *Sat* WGC Plant Sale, Wellington Amphitheater  
May 4, *Mon* Spring Luncheon, Scholarships - Location TBD (11:00AM-2:00PM)  
May 12-14, *Tues* NGC Convention-Milwaukee, WI (*Tues-Thurs*)  
May 27, *Wed* WGC Board Meeting -Wellington Community Center (9:30AM)  
Jun 1-7, *Sun* Celebrate National Garden Week (*Sun-Sat*)

## MEETINGS SUMMARY

**Garden Club Meetings** are held September through November and January through April on the first Monday of the month at the Wellington Community Center, 12150 Forest Hill Blvd, Village of Wellington, unless otherwise noted. December and May Club Luncheons are held at a special venue.

9:30 AM	Social/Light Breakfast
10:15 AM	Business Meeting
11:15 AM	Speaker

### 2019-2020 ANNUAL DUES NOTICE

Amount Due: Single Member: \$45; Couple \$65.

Make checks payable to: **Wellington Garden Club.**

Mail checks to: Barbara Ricksen, Membership Data Manager  
13572 Exotica Ln, Wellington, FL 33414-8103

**2020-2021 Dues are due by April 30, 2020**

Dues renewal reminders will be sent to members by email or letter by  
March 15, 2020

**Board of Directors Meetings** are held monthly at the Wellington Community Center from 9:30-11:00 AM, August through May, unless otherwise noted. Meetings are open to non-Board members. Non-Board members who wish to address the Board are requested to submit discussions to the President at least two days prior to the meeting (if possible) to be added to the agenda.

### 2019-2020 Board of Directors Meeting Dates

August 28, <i>Wednesday</i>	January 29, <i>Wednesday</i>
October 2, <i>Wednesday</i>	February 26, <i>Wednesday</i>
October 30, <i>Wednesday</i>	April 1, <i>Wednesday</i>
November 25, <i>Monday</i>	April 29, <i>Wednesday</i>
December 30, <i>Monday</i>	May 27, <i>Wednesday (if necessary)</i>

### CARPOOL MEETING LOCATIONS

**Westside:** Wellington Community Center Parking Lot next to pool, 12150 Forest Hill Blvd., Wellington, FL 33414.

**Eastside:** Parking lot behind IHOP, River Bridge Shopping Center, 6708 Forest Hill Blvd., Greenacres, FL 33413.

### PAYMENT POLICY

Payment for a Wellington Garden Club fee-based event or class must be made at the time of sign up. Payment is non-refundable if cancellation is made less than one week prior to the event or class or for a no-show, unless otherwise noted.

## NGC AND FFGC/UF EDUCATIONAL OPPORTUNITIES

2019-2020

- Nov 21-22 (*Thurs-Fri*) NGC Gardening School, Mounts Botanical Garden, West Palm Beach
- Jan 23-24 (*Wed-Thurs*) 64th Annual Tropical Short Course, NGC Tri-Refresher, Mounts Botanical Garden, West Palm Beach
- Feb 24-25 (*Mon-Tues*) NGC Gardening School, Mounts Botanical Garden, West Palm Beach

For further details and interactive registration forms, please visit [www.districtx.org](http://www.districtx.org) and click on Educational Opportunities.

### Clubs, Councils and Societies @ Mounts Botanical Garden

To see the list of clubs, councils and societies at Mounts, visit:

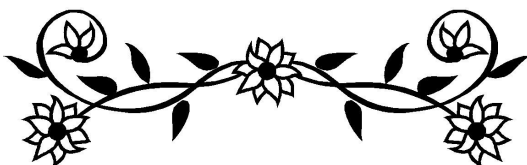
[www.mounts.org/palm-beach-county-plant-societies/](http://www.mounts.org/palm-beach-county-plant-societies/)

All meetings are held in the Mounts Building Auditorium, except where noted. **531 North Military Trail, West Palm Beach – (561) 233-1700**

For more information, please visit:

[www.pbcgov.com/coextension](http://www.pbcgov.com/coextension)

Due to conflicting dates or cancelled meetings, please call contact person listed for confirmation.



### NGC Conservation Pledge

I pledge to protect and conserve the natural resources of the planet Earth and promise to promote education so we may become caretakers of our air, water, forest, land, and wildlife.

### FFGC/Wekiva Youth Camp Conservation Pledge

I give my pledge as an American to save and faithfully defend from waste the natural resources of my country—its air, soil and minerals, its forests, waters, and wildlife.

## WGC MEETING - Tuesday, September 3, 2019

### Native Plants in our Gardens

Susan Lerner

Director of Horticulture, Preservation Foundation  
of Palm Beach

<https://www.palmbeachpreservation.org/visit/pans-garden>



Susan Lerner is the Director of Horticulture at the Preservation Foundation of Palm Beach. She is responsible for the management of Palm Beach's native oasis - Pan's Garden, Earl E.T. Smith Park, and the grounds around the Preservation Foundation's building. Additionally, she teaches garden education programs to school children and arranges education programs for adults.

A combination of wetlands and uplands, Pan's Garden, which shelters hundreds of species of native plants, gives visitors a sense of what Palm Beach might have looked like before settlers of European descent arrived in the 1800s. Susan is a Florida Master Gardener, Secretary of the Backyard Beekeepers Association, Past President of the Palm Beach County Chapter of the Florida Native Plant Society and the Palm Beach Chapter of the Rare Fruit Council International. Her half acre West Palm Beach yard is planted with hundreds of Florida native plants, over two dozen fruit trees and other edibles – enough to keep her, the bees, birds, and butterflies, fed year-round.



## AROUND & ABOUT - Thursday, September 19, 2019

### Port St. Lucie Botanical Garden

2410 SE Westmoreland Blvd, Port St. Lucie, FL 34952

772-337-1959

<http://www.pslbg.org>

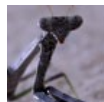
**CARPOOL LOCATIONS:** Depart 9:30 AM SHARP

**TOUR:** 11:00 AM (1 hour). **COST:** Donation

**LUNCH:** on our own (restaurants are within walking distance)

**SIGNUP DEADLINE WITH PAYMENT:** September 12, 2019

The site boasts a lake with a fountain, convenient paved paths, beautiful gardens, a pavilion, and a gift shop. The gardens wetlands and mangroves sit on the banks of the beautiful, pristine North Fork of the St. Lucie River. This site is comprised of scrub, scrubby flatwoods, bay-gall, and wet flatwoods with a mangrove fringe. The 12.87 acres south of the gardens access road will be maintained as undisturbed Florida wetlands, subject only to the removal of exotics and maintenance of an eventual walking trail.



## WGC MEETING—Monday, October 7, 2019

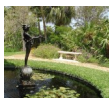
### Managing Garden Pests

Lance S. Osborne, Ph.D

Professor of Entomology, University of Florida

lsosborn@ufl.edu

Lance S Osborne received his Ph.D in Entomology from University of California. He is currently a professor of entomology at UF spending 50% of his time in research and the balance in teaching, administration, and extension; he is also Associate Center Director, University of Florida, Mid-Florida Research and Education Center. Dr Osborne's work included managing whiteflies, mites, and other destructive pests through biological intervention reducing the need for traditional pesticides. His experience and advice for pest control in our gardens will be invaluable!



## AROUND & ABOUT - Thursday, October 24, 2019

### Pan's Garden

386 Hibiscus Ave, Palm Beach, FL 33480

561-832-0731

**CARPOOL LOCATIONS:** Depart 9:15 AM SHARP

**TOUR:** 10:15 AM **COST:** \$7.00

**LUNCH:** On our own

**SIGNUP DEADLINE WITH PAYMENT:** October 10, 2019

Established in 1994 by the Preservation Foundation of Palm Beach, Pan's Garden takes its name from the bronze statue of Pan of Rohallion that graces the garden's entrance pool. Designed by Frederick MacMonnies in 1890, the statue depicts Pan – the ancient god of shepherds who protects and guards the flocks – in idealized human form playing his enchanted pipe of reeds. It is a fitting name and symbol for a garden that serves to protect and showcase Florida's indigenous plants.

The one-half acre garden features over 300 species of native trees, shrubs, grasses and wild flowers, many of which are endangered. These are incorporated into upland and wetland areas designed to display their naturally occurring relationships to one another. Each year cultivars of native species are planted in seasonal floral display areas to highlight possible choices for residential landscaping.



**WGC MEETING - Monday, November 4, 2019**  
**Designs Found in a Doll House**

We are in for a treat! A consortium of very talented designers, whose biographies are not possible to include in this limited space, have agreed to share their creative expertise with the Wellington Garden Club at our November meeting. We will learn what to use for miniature floral designs, the art of how and where to place the components, and where they are appropriate to display. This is going to be an exciting learning experience.



**AROUND & ABOUT -Thursday, November 14, 2019**

**McCarthy's Wildlife**

12943 61st St, Loxahatchee, FL 33412  
561-790-2116

**CARPOOL LOCATIONS:** 10:00 AM SHARP

**TOUR:** 11:00 AM **COST:** \$35.00

**LUNCH:** on our own

**SIGNUP DEADLINE WITH PAYMENT:** October 28, 2019

**LIMITED TO 20 PEOPLE**

McCarthy's Wildlife Sanctuary is home to over 200 animals. Eight lush acres of endangered wildlife surrounded by a botanical garden situated in the palmetto and pine trees of West Palm Beach. You will be able to get close up experiences with many animals and closer than you can get at any zoo. You will have the opportunity to hold multiple/different animals. Come with us and enjoy the wildlife.





**AROUND & ABOUT –**  
**Friday - December 13, 2019**  
**Ann Norton Museum &**  
**Sculpture Gardens**



253 Barcelona Rd, West Palm Beach, FL 33401  
 561-832-5328

**CARPOOL LOCATIONS:** 9:30 AM SHARP

**TOUR:** 10:30 AM **COST:** \$15.00 **LUNCH:** on our own

**SIGNUP DEADLINE WITH PAYMENT:** December 2, 2019

The Ann Norton Sculpture Gardens comprise the former residence of sculptor Ann Weaver Norton (1905 -1982), the widow of Ralph Hubbard Norton. The house is listed in the National Register of Historic Places, and the two-acre property, featuring a collection of 250 species of tropical palms, lies near downtown West Palm Beach on the Intracoastal Waterway.

Displayed throughout the house, studio and gardens are more than 100 works by the artist, including nine monumental sculptures, eight in brick and one in granite. See description in WGC website event calendar for more information.



**WGC MEETING -**

**Monday, January 6, 2020**

**Marine Conservation – Turtles and sea horses**

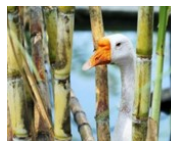


Nancy Ho, M.S., Vice President, Education Director

Nancy's passion for aquatic life and education started early. Her first jobs in high school included a tutor, swim instructor and water polo coach. After receiving a B.S. degree in Animal Science and Management from the University of California, Davis, she came to Florida as an intern at Disney's "The Seas with Nemo and Friends." Afterwards, Nancy obtained her M.S. degree at Florida Institute of Technology (FIT) studying seahorses. She was the site manager and research associate at the FIT Vero Beach Marine Lab. Currently she is working as a biological scientist at Disney's "The Living Seas." Her focus is on seahorse conservation and Nancy coordinates with a variety of government and non-government organizations to evaluate seahorse populations in the Atlantic and Gulf of Mexico. She also works on various education programs and has been the lead coordinator on our diamondback terrapin project in the Indian River Lagoon.



**AROUND & ABOUT - Thursday,  
January 16, 2020  
RAISIN' CANE SUGARCANE  
HARVEST TOUR**



Clewiston, FL

**CARPPOOL LOCATIONS:** All will leave from the Wellington Community Center - Time to be provided

**TOUR: IT WILL BE EARLY**      **COST: FREE**

**LUNCH:** provided by Florida Sugar Cane details to come when you fill out the registration form.

**SIGNUP DEADLINE:** December 30, 2019.

Explore the flourishing agricultural industries of Palm Beach County! There will be a guided tour behind the scenes of U.S. Sugar Harvesting facilities in Clewiston, FL. We will learn how sugarcane is harvested, processed and packaged.

We will visit Southern Garden Citrus Groves, Florida Crystal, Lake Okeechobee and more.



**WGC MEETING—Monday, February 3, 2020**

Gardening – Farmer Jay

<https://www.myfarmerjay.com/my-philosophy>

Jason McCobb (AKA Farmer Jay) is a well know garden farmer in our area. In addition to farming and building gardens, he has also developed a program for children called Farmer Jay's Jr. Sprouts, which teaches kids where food comes from and helps to pass along the lost art of Sustainable Agriculture. He and his wife have recently turned Farmer Jay's Jr. Sprouts into a non-profit organization and together, they look forward to making an impact in their local community by teaching the next generation how to grow their own food.

Jason built a sustainable garden for the chefs at The Breakers Hotel which digested over 3000 pounds per week of vegetable waste from the kitchen that he utilized to grow specialty salads, herbs, and micro greens on an half acre plot.

Other noteworthy gardens Jay has built and consulted for include; Calloway Gardens, Little St. Simons Island, Jekyll Island, Pine Jog Environmental Center, Palm Beach County Schools, various Palm Beach County private schools, Federation of Gardens, Herb Society of Palm Beach, Palm Beach County Extension/UF, the South Florida Fair, Sublime, Dig, Max's Harvest, Kapow, Delray Community Garden, Boca Raton Community Garden, iPic, and Green Gourmet. Jay also was a guest host for The Balancing Act on Lifetime Television Network and the lead consultant for the Backyard Gardens infomercial.



**AROUND & ABOUT - Thursday, February 20, 2020**

**Loggerhead Marinelifelife Center**  
14200 U.S. Highway 1, Juno Beach, FL  
561-627-8280

**CARPOOL LOCATIONS:** Depart 10:45AM SHARP  
**TOUR:** 12:00 NOON (1 hour). **COST:** \$12.00  
**LUNCH:** on our own (restaurants are within walking distance)  
**SIGNUP DEADLINE WITH PAYMENT:** February 6, 2020

Enjoy a private guided tour of the Loggerhead Marinelifelife Center. On our tours get an up close look at our outdoor sea turtle hospital. You will learn about each patient and have any of the questions you may have answered.

At the facility they do rehabilitation and research.

**WGC MEETING—**  
**Monday, March 2, 2020**  
**Florida Friendly Landscaping**  
**Laurie Albrecht**  
<https://sfyl.ifas.ufl.edu/>



Laurie Albrecht is an Environmental Horticultural agent for the UF/IFAS Palm Beach County Cooperative Extension. Laurie is well known as an expert in Florida Friendly Landscaping. Her horticultural presentation will emphasize major principles to follow in south Florida that will create beautiful and easy to maintain yards and gardens while protecting the environment. Learn how to use the correct plantings to save time, energy, resources, and money; Laurie will show you how.



**AROUND & ABOUT -**  
Friday, March 20, 2020  
**Norton Museum of Art**

1450 S. Dixie Highway, West Palm Beach,  
561-832-1146



**CARPOOL LOCATIONS:** 9:00 AM SHARP

**TOUR:** 10:00 AM **COST:** \$15.00

**LUNCH:** On our own

**SIGNUP DEADLINE WITH PAYMENT:** March 6, 2020

The Museum's permanent collection now consists of more than 7,600 works in five curatorial departments: European, American, Chinese, Contemporary and Photography. Since 1954, many distinguished additions have been made thanks to the endowment Mr. Norton created for the purchase of works of art. They include masterpieces such as Stuart Davis's *New York Mural* (acquired in 1964), and Jackson Pollock's *Night Mist* (acquired in 1971).

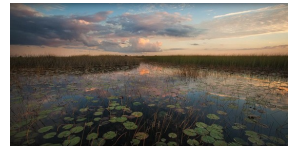
In 2011, the Norton launched Recognition of Art by Women (RAW), an annual exhibition series that celebrates the contributions of living female painters and sculptors with solo exhibitions.

**WGC MEETING—Monday, April 6, 2020**

**Why Do Everglades Restoration**

**Fred Sklar**

Section Administrator - Everglades Sys -SFWMD



Fred H. Sklar has a Masters in Oceanography and a Ph.D. in Wetland Ecology. He is the Director of the Everglades Systems Assessment Section of the South Florida Water Management District in West Palm Beach, FL. Dr. Sklar is an Associate Editor for the journal: *Frontiers in Ecology and the Environment*; a member of the National Environmental Advisory Board to the Chief of the U.S. Army Corps of Engineers; a member of the Louisiana Science and Engineering Advisory Committee for the Water Institute of the Gulf; and an executive member of the steering committee for the FIU Florida Coastal Ecosystem Program. His research is focused on adaptive management for coastal and wetland ecosystems, mangrove biogeochemistry, Everglades restoration, tree island ecology and landscape modeling. Dr. Sklar has published 100+ articles and reports on the impacts of hydrology on aquatic soil, plant and animal processes.



**AROUND & ABOUT - Thursday, April 16, 2020**

**River Lilly Cruise**

500 E Prima Vista Blvd., Port St Lucie, FL 34983

772-489-8344

<http://www.riverlillycruises.com/>

**CARPOOL LOCATIONS:** Depart at 9:30 AM SHARP

**TOUR:** 11:00 AM (1-1/2 hour) **COST:** \$23 (limit 34 people)

**LUNCH:** New England Fish Market and Restaurants, 1419 NE Jensen Beach Blvd, Jensen Beach, Fl

**SIGN UP DEADLINE & PAYMENT:** March 30, 2020

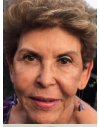
The River Lilly is a 34-passenger pontoon boat, licensed by the U.S. Coast Guard and owned by Eddie and Stephanie Hamrick. Eddie is a U.S. Coast Guard licensed Captain. The cruise on parts of the river are so wild they were used in the James Bond film "Moonraker" to represent a tributary of the Amazon. It is on the same waters used by early settlers and Native Americans. Each trip is different, but you're sure to see alligators, turtles, and lots of native birds, maybe even playful otters or gentle manatees.

## MEMBERSHIP (Active Members)



**Akins, JoAnn (Thomas)**  
158 Cypress Trace  
Royal Palm Beach 33411-4707

**Home:** 561-793-6377  
**Cell:** 561-267-6900  
jakins820@att.net



**Alatzas, Alice (Michael)**  
9614 Via Elegante  
Wellington 33411-6559

**Home:** 561-383-6221  
**Cell:** 631-278-4752  
malatzas@hotmail.com



**Albury, Alison (Peter)**  
145 Sandy Pine Court  
Wellington 33414-4738

**Home:** 561-372-5952  
**Cell:** 315-681-8867  
kaalbury@gmail.com



**Alexander, Mary (Michael)**  
1727 Primose Ln  
Wellington 33414-8667

**Home:** N/A  
**Cell:** 508-494-7863  
mbas@verizon.net



**Banchy, Annmarie (John Green)**  
268 Kensington Way  
Royal Palm Beach 33414-4316

**Home:** N/A  
**Cell:** 860-970-9356  
abanchy@me.com



**Bard, Gayle (Gigi)**  
2699 Irma Lake Drive  
West Palm Beach 33411-5735

**Home:** 561-478-0741  
**Cell:** 631-766-1548  
gigiwpb@gmail.com



**Barnhart, Dale (Mimi)**  
14454 Autumn Avenue  
Wellington 33414-8248

**Home:** 561-791-2899  
**Cell:** 561-315-5655  
dalembarnhart@gmail.com



**Bartley, Evelyn**  
507 Landings Blvd  
Greenacres 33413-2031

**Home:** 561-642-1241  
**Cell:** 561-308-5007  
evvy35@comcast.net



**Beehler, Jeannine (Thane)**  
12127 Big Cone Ct  
Wellington 33414-5634

**Home:** N/A  
**Cell:** 561-386-8590  
jbeehler@comcast.net



**Bellomo, Dora**  
9509 Via Grande West  
Wellington 33411-6546

**Home:** N/A  
**Cell:** 516-446-5131  
PDJL657@gmail.com



**Bendich, Adrianne (David)**  
8765 Via Brilliante  
Wellington 33422-6532

**Home:** N/A  
**Cell:** 973-214-1643  
abendich@aol.com



**Bhatti, Uma (Saghir)**  
 1433 Northampton Ter  
 Wellington 33414-5716

**Home:** 561-795-4144  
**Cell:** 561-301-4956  
 uma1131@aol.com



**Biscoglio, Christine (Phil)**  
 806 E. Windward Way, Apt 406  
 Lantana 33462-8011

**Home:** 561-753-3925  
**Cell:** 631-793-5349  
 2us@comcast.net



**Bivin, Stormi (Tom)**  
 1945 S Club Dr  
 Wellington 33414-9091

**Home:** 561-753-3315  
**Cell:** 561-352-0129  
 sbivin@aol.com



**Bivin, Thomas (Stormi)**  
 1945 S Club Dr  
 Wellington 33414-9091

**Home:** 561-753-3315  
**Cell:** 561-866-6292  
 bivinjr@aol.com



**Bolivar, Rebecca (Jacobo)**  
 14979 Horseshoe Trace  
 Wellington 33414-7874

**Home:** N/A  
**Cell:** 954-205-3450  
 tdpi@bellsouth.net



**Brody, Carol**  
 801 Caraway Ct  
 Wellington 33414-8211

**Home:** 561-792-0806  
**Cell:** 561-301-7128  
 carolzbrody@comcast.net



**Brown, Kay**  
 13882 Exotica Ln  
 Wellington 33414-8154

**Home:** N/A  
**Cell:** 561-784-8809  
**Email:** N/A



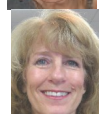
**Cavaleri, Ann**  
 435 Midsummer Ct  
 Royal Palm Beach 33411-1550

**Home:** 561-753-0912  
**Cell:** N/A  
**Email:** N/A



**Chestnut, Mary Ellen (Earl)**  
 545B Covered Bridge Blvd.  
 Lake Worth 33467-3072

**Home:** 561-641-4636  
**Cell:** 828-524-0638  
 earl1463@yahoo.com



**Cinieri, Nancy (Ray)**  
 8175 Laborie Ln  
 Wellington 33414-3443

**Home:** 561-432-8055  
**Cell:** 561-329-7211  
 cinieri@bellsouth.net



**Coleman, Carol (Harvey)**  
 14224 Stroller Way  
 Wellington 33414-6812

**Home:** 561-792-2290  
**Cell:** 201-739-2013  
 taxi44480@aol.com



**Correra, Bernice (Ken)**  
 2035 Sunderland Ave  
 Wellington 33414-1053

**Home:** N/A  
**Cell:** 561-628-6978  
 us1canuck@aol.com



Cummings, Teresa (Chris)  
10481 Prato St  
Wellington 33414-4393

Home: N/A  
Cell: 561-676-3841  
tlctreasures58@gmail.com



Damas, Huguette (Anthony)  
10634 Falls St  
Wellington 33414-3140

Home: 561-784-2497  
Cell: 610-737-2722  
huguette.damas@gmail.com



DeSanti, Linda (Leonard)  
14022 Greentree Trail  
Wellington 33414-4000

Home: N/A  
Cell: 561-758-7415  
gdesanti@bellsouth.net



Devault, Catherine  
4058 126th Drive N  
West Palm Beach, 33411-8938

Home: N/A  
Cell: 561-371-6526  
N/A



Drexler, Mary  
2723 Misty Oaks Cir  
Royal Palm Beach 33411-6809

Home: N/A  
Cell: 561-506-7404  
mkdrexler@comcast.net



Evans, Silvia (Bill)  
4295 Hunting Trail  
Lake Worth 33467-3515

Home: N/A  
Cell: 561-310-1748  
sevans@PBAFS.com



Falik, Claire  
10535 SW Sunray St  
Port St. Lucie 34987-7721

Home: N/A  
Cell: 561-313-1039  
clafal8060@aol.com



Fenner, Shirley  
15850 Glen Willow Ln  
Wellington 33414-6372

Home: 561-333-2098  
Cell: 561-310-6358  
gamboling@bellsouth.net



Ferrano, Lisa (Frank)  
83 Westbury Close  
Wellington 33414-4043

Home: N/A  
Cell: 561-628-3675  
paddockpark@bellsouth.net



Finch, Ann (Frank)  
14274 Greentree Trl  
Wellington 33414-4046

Home: 561-333-6496  
Cell: 561-358-0528  
annfinch511@gmail.com



Fisher, Maxine (Norton)  
8233 Pine Cay Rd  
Wellington, 33414-3483

Home: 561-557-3770  
Cell: 561-701-1279  
mfisher826@gmail.com



Foos, Beth (Courtney)  
735 Daffodil Dr  
Wellington 33414-7039

Home: 561-791-1876  
Cell: 484-252-1554  
bethfoos@aol.com





**Forgash, Barbara**  
 11535 Whitemarsh Dr  
 Wellington 33414-5937

**Home:** 561-798-4975  
**Cell:** 561-632-2195  
 bforgash@bellsouth.net



**Foster, Kevin**  
 119 Waterway Rd  
 Royal Palm Beach 33411-1554

**Home:** N/A  
**Cell:** 561-352-3103  
 kfost2000@yahoo.com



**Friedlander, Denise**  
 7760 Nile River Road  
 West Pam Beach 33411-5769

**Home:** 561-791-4681  
**Cell:** 561-252-3333  
 polishhoney@aol.com



**Gardner, Cynthia**  
 3380 Fairlane Farms Rd, #8  
 Wellington 33414-8764

**Home:** 561-753-7656  
**Cell:** 561-685-4497  
 gardn58@aol.com



**Geiger, Nan**  
 9677 Via Grande West  
 Wellington 33411-6546

**Home:** 561-795-9247  
**Cell:** 561-281-6009  
 geiger269@gmail.com



**Ginn, Beverley (Robert)**  
 11854 Pebblewood Dr  
 Wellington 33414-6069

**Home:** 561-790-0429  
**Cell:** N/A  
 bjuneg@yahoo.com



**Greely, Mary Anne (Jerry)**  
 9012 Pitrezza Dr  
 Lake Worth 33467-3724

**Home:** 561-968-1062  
**Cell:** N/A  
 magreely@yahoo.com



**Greene, Jeremy**  
 2070 Appaloosa Trail  
 Wellington 33414-7646

**Home:** N/A  
**Cell:** 716-997-8681  
 aspenhurstllc@gmail.com



**Griffin, Caren (Tom Romah)**  
 148 Cypress Trace  
 Royal Palm Beach 33411-4707

**Home:** 561-670-2255  
**Cell:** 561-315-0571  
 angelvision711@yahoo.com



**Griffin, Paige (Bill)**  
 157 Cypress Trace  
 Royal Palm Beach 33411-4708

**Home:** N/A  
**Cell:** 561-310-5119  
 agri349229@aol.com



**Grosser, Larry**  
 11128 62<sup>nd</sup> Ln N  
 West Palm Beach 33412-1822

**Home:** 561-684-0305  
**Cell:** N/A  
 lglychee@aol.com



**Hadsell, Barbara (Tim)**  
 6506 Sandi Ln  
 Greenacres 33467-1537

**Home:** 561-439-4607  
**Cell:** 561-635-8809  
 barbarahadsell@cs.com



Hadsell, Tim (Barbara)  
6506 Sandi Ln  
Greenacres 33467-1537

Home: 561-439-4607  
Cell: 561-670-4790  
timhadsell@cs.com



Harper, Angela  
14829 71st Pl N  
Loxahatchee 33470-4491

Home: 561-793-9628  
Cell: 561-252-7368  
apatharper@hotmail.com



Hartman, Cynthia (William)  
1924 Breakers Pointe Way  
West Palm Beach 33411-5118

Home: 561-795-7927  
Cell: 561-512-5165  
cindybhart@aol.com



Harwood, Melanie  
2417 Vista Del Prado  
Wellington 33414-5880

Home: 561-795-8684  
Cell: 201-417-3878  
mwhgardner@gmail.com



Helms, Kimberly (Thomas)  
9443 Granite Ridge Lane  
West Palm Beach 33411-6604

Home: N/A  
Cell: 561-350-8681  
KimberlysKreations@icloud.com



Henry, Roxanne (Douglas)  
15430 DeHavilland Ct  
Wellington 33414-8344

Home: N/A  
Cell: 561-818-0897  
roxhomes@hotmail.com



HERNICZ, Kathy (Chuck)  
1460 Wood Row Way  
Wellington 33414-9084

Home: N/A  
Cell: 561-358-4995  
ckhernicz@yahoo.com



Hillson, Susan (Max)  
8959 Via Prestigio West  
Wellington 33411-6513

Home: 561-333-0740  
Cell: 978-250-0030  
susan@thehillsongroup.com



Hlasnicek, Ann (Stephen)  
119 Old Country Road  
Wellington 33414-4816

Home: 561-793-7290  
Cell: N/A  
srsrnick@bellsouth.net



Hood, Kathy (Larry)  
120 Cypress Trace  
Royal Palm Beach 33411-4707

Home: N/A  
Cell: 561-847-5169  
kathyhood72@gmail.com



Horn, Shirley (David Rosenberg)  
10734 Versailles Blvd  
Wellington 33449-8086

Home: 561-204-1894  
Cell: 908-216-8240  
shirlhorn@aol.com



Hoyt, Harvey (Jan)  
8550 Via Brilliante  
Wellington 33411-6526

Home: 561-629-5230  
Cell: N/A  
harveyjhoyt@aol.com



**Hoyt, Jan (Harvey)**  
8550 Via Brillante  
Wellington 33411-6526

**Home: 561-629-5230**  
**Cell: 206-251-7336**  
**jan.hoyt2@gmail.com**



**Izaguirre Guerrero, Edith**  
1841 Clydesdale Ave  
Wellington 33414-105

**Home: 561-792-1849**  
**Cell: 561-601-1599**  
**eyzaguirre2010@hotmail.com**



**Jacobs, Peggy (Jeremy)**  
12500 Pierson Road  
Wellington 33414-8401

**Home: 561-793-0644**  
**Cell: 716-208-8801**  
**Email: N/A**



**Jacobson, Pamela W (Donald)**  
8659 Via Prestigio East  
Wellington 33411-6514

**Home: 561-792-7717**  
**Cell: 561-876-4042**  
**flapaws@gmail.com**



**Kaplan, Joan (Harvey)**  
9245 Via Grande West  
Wellington 33411-6543

**Home: 561-795-4888**  
**Cell: 561-628-4752**  
**admiral29@aol.com**



**Karlo, Cheryl (Michael)**  
1723 Dorchester Pl  
Wellington 33414-8929

**Home: 561-798-4406**  
**Cell: 561-236-1132**  
**mcfish41@yahoo.com**



**Kastner, Mary**  
2690 Neaton Ct  
Wellington 33414-8329

**Home: 561-729-0126**  
**Cell: 201-715-1257**  
**dazzlenj@gmail.com**



**Kessman, Caroline (Irwin)**  
3068 Florence St  
Wellington 33414-4327

**Home: N/A**  
**Cell: 561-324-8320**  
**ckessman@gmail.com**



**Kiesewetter, Jayne (Bill)**  
2121 Wingate Bend  
Wellington 33414-6253

**Home: 561-791-0273**  
**Cell: N/A**  
**jbinwelly@comcast.net**



**Kouba, Katharine (Bill)**  
12752 Meadowbreeze Dr  
Wellington 33414-7943

**Home: N/A**  
**Cell: 561-891-0623**  
**ktkouba@yahoo.com**



**Krenkel, Carol**  
4351 Hunting Trail  
Lake Worth 33467-3505

**Home: N/A**  
**Cell: 561-635-3642**  
**ckrenkel@bellsouth.net**



**Lazzarino, Carol**  
2168 Appaloosa Trail  
Wellington 33414-7056

**Home: 561-784-8459**  
**Cell: 561-312-2082**  
**clazzar586@aol.com**



**Lowe, Carolyn (Keith)**  
2047 Blue Springs Rd  
West Palm Beach 33411-5707

**Home: 561-683-0009**  
**Cell: 561-385-4114**  
**carolynlowewpb@gmail.com**



**Macnak, Phil (Diane Rice)**  
14909 Horseshoe Trace  
Wellington 33414-4053

**Home: 561-798-6548**  
**Cell: N/A**  
**pmacnak@earthlink.net**



**Marcus, Gwen (Joel)**  
9174 Via Elegante  
Wellington 33411-6551

**Home: N/A**  
**Cell: 561-578-3324**  
**gwenmarcus@outlook.com**



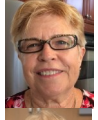
**May, Barbara (Maurice)**  
4521 Barclay Fairway  
Wellington 33449-8113

**Home: 561-304-0193**  
**Cell: 781-929-6504**  
**maydesign4521@gmail.com**



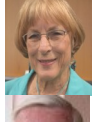
**Mesmer, Helga**  
89 Woodrose Ct  
Royal Palm Beach 33411-1650

**Home: 301-498-2424**  
**Cell: 240-393-6595**  
**hst715@aol.com**



**Messina, Linda (Page)**  
9701 Pine Trail Court  
Lake Worth, 33467-2366

**Home: N/A**  
**Cell: 561-512-5638**  
**lkmessina5@aol.com**



**Millette, Sharon**  
3574 Woods Walk Blvd  
Lake Worth 33467-2341

**Home: 561-434-9379**  
**Cell: 561-371-8055**  
**boongy46@yahoo.com**



**Morris, Kevin (Twig)**  
2087 Guadeloupe Dr  
Wellington 33414-6471

**Home: 561-434-6629**  
**Cell: N/A**  
**twig\_morris@hotmail.com**



**Morris, Twig (Kevin)**  
2087 Guadeloupe Dr  
Wellington 33414-647

**Home: 561-434-6629**  
**Cell: 201-230-6324**  
**twig\_morris@hotmail.com**



**Naulty, Betty**  
11941 Suellen Cir  
Wellington 33414-6277

**Home: 561-753-6767**  
**Cell: N/A**  
**Email: N/A**



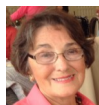
**Orr, Antoine (Lisa)**  
2937 Appaloosa Trail  
Wellington 33414-7640

**Home: N/A**  
**Cell: 410-913-6245**  
**dwyorr10@gmail.com**



**Orr, Lisa Dwyer (Antoine)**  
2937 Appaloosa Trail  
Wellington 33414-7640

**Home: N/A**  
**Cell: 410-913-6245**  
**dwyorr10@gmail.com**



**Pollacchi, Rickie**  
 1592 S Club Dr  
 Wellington 33414-1079

Home: 561-792-0045  
 Cell: 561-346-8860  
 aeplr@bellsouth.net



**Ralph, Carol**  
 16785 93rd Rd N  
 Loxahatchee 33470-2770

Home: 561-557-5156  
 Cell: 740-243-8843  
 caroltaylorralph@gmail.com



**Rawlings, Ellen (Harry)**  
 548 Sweetwood Way  
 Wellington 33414-4972

Home: 561-795-4349  
 Cell: 561-386-2539  
 Email: N/A



**Rice, Diane (Phil Macnak)**  
 14909 Horseshoe Trace  
 Wellington 33414-4053

Home: 561-798-6548  
 Cell: 561-386-6735  
 Diane@pbccleanup.info



**Richter Becker, Tina (Jeff)**  
 1989 South Club  
 Wellington 33414-9094

Home: 561-784-8065  
 Cell: 201-220-3892  
 tinaj.richter@gmail.com



**Ricksen, Barbara (John)**  
 13572 Exotica Ln  
 Wellington 33414-8103

Home: N/A  
 Cell: 561-312-5959  
 ricksen3@bellsouth.net



**Ricotta, Stephanie (Joe)**  
 10345 Medicis Place  
 Wellington 33449-8069

Home: 561-614-2599  
 Cell: 212-671-2598  
 stephanie.om@verizon.net



**Rolfe, Dee (Robert)**  
 13542 Lamirada Cir  
 Wellington 33414-3956

Home: 561-753-9813  
 Cell: N/A  
 rolfew@aol.com



**Romah, Tom (Caren Griffin)**  
 148 Cypress Trace  
 Royal Palm Beach 33411-4707

Home: N/A  
 Cell: 561-305-3539  
 tomromah@yahoo.com



**Rubin, Adele**  
 2059 Guadeloupe Dr  
 Wellington 33414-6471

Home: N/A  
 Cell: 203-658-4499  
 adelrubin2017@gmail.com



**Russell, Deborah**  
 571 Juniper Pl  
 Wellington 33414-8193

Home: 561-410-5995  
 Cell: 561-290-9959  
 debrusl@bellsouth.net



**Russell, Petra**  
 6220 Kelty Way  
 Lake Worth 33467-3724

Home: N/A  
 Cell: 561-398-5588  
 rede2enjoylife@gmail.com



Samuels, Harriet  
12598 Majestic Isles Dr  
Boynton Beach 33437-4154

Home: N/A  
Cell: 561-715-0950  
hiswpbwh@gmail.com



Schneider, Kathleen  
1776 The 12th Fairway  
Wellington 33414-5936

Home: N/A  
Cell: 513-545-4981  
kathyschneider1@comcast.net



Schwed, Amy (Richard)  
9628 Via Elegante  
Wellington 33411-6559

Home: 561-318-8338  
Cell: 845-242-7025  
amyschwed@gmail.com



Seagrave, Jan  
658 Spinnaker Ct  
Wellington 33414-4927

Home: 561-793-1697  
Cell: 561-301-9184  
jflygirl@bellsouth.net



Siena, John (Kathy)  
1979 S Club Dr  
Wellington 33414-9093

Home: N/A  
Cell: 561-797-8818  
jcsiena@gmail.com



Siena, Kathy (John)  
1979 S Club Dr  
Wellington 33414-9093

Home: N/A  
Cell: 561-371-3388  
ksiena2000@gmail.com



Sklar, Sandra (Fred)  
73 Pacer Cir  
Wellington 33414-4049

Home: 561-798-1307  
Cell: 561-889-4291  
sandraskl@aol.com



Sloan-Kendall, Danese (David)  
9040 Bay Harbour Cir  
West Palm Beach 33411-5152

Home: 561-791-3018  
Cell: 561-315-9527  
sloanken@aol.com



Smith, Claudia (David)  
5405 Leeway Court  
Wellington 33414-7944

Home: 703-425-0935  
Cell: 703-862-9296  
chcalissie@msn.com



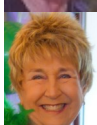
Smith, Elizabeth (Michael)  
2697 Treanor Terrace  
Wellington 33414-6460

Home: 561-795-3018  
Cell: 561-373-0385  
lizzwpb@aol.com



Smith, George (Pat)  
116 Cuyahoga Rd  
Lake Worth 33467-3820

Home: N/A  
Cell: 561-685-2518  
georgesmith8488@gmail.com



Smith, Joyce (Michael)  
13109 Meadowbreeze Dr  
Wellington 33414-7944

Home: 561-790-3597  
Cell: 561-601-8955  
chilipepperjoyce@aol.com



**Smith, Patricia (George)**  
 116 Cuyahoga Rd  
 Lake Worth 33467-3820

Home: N/A  
 Cell: 561-602-2947  
 georgesmith8488@gmail.com



**Stein, Janet**  
 5909 Rosman Ct  
 West Palm Beach 33413-1124

Home: 561-684-2135  
 Cell: 561-315-9501  
 jrstein@bellsouth.net



**Steinmetz, Natalie (Jerome)**  
 2141 Greenview Cove Dr  
 Wellington 33414-7751

Home: 561-798-1264  
 Cell: N/A  
 jernat1@aol.com



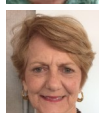
**Steinmetz, Jerome (Natalie)**  
 2141 Greenview Cove Dr  
 Wellington 33414-7751

Home: 561-798-1264  
 Cell: N/A  
 jernat1@aol.com



**Stokes, Pamela**  
 1508 S Club Dr  
 Wellington 33414-1079

Home: 561-793-2411  
 Cell: N/A  
 ladyPam129@aol.com



**Stryker, Cassandra**  
 12764 Meadowbreeze Dr  
 Wellington 33414-8045

Home: 561-790-6353  
 Cell: 561-629-2665  
 caslib036@aol.com



**Tauber, Chrystine (George)**  
 2531 Windsor Way Ct  
 Wellington 33414-7036

Home: N/A  
 Cell: 561-308-9927  
 taubercj@msn.com



**Teston, Karin**  
 720 Cypress Green Cir  
 Wellington 33414-6337

Home: 561-847-4634  
 Cell: 407-721-0060  
 karinteston720@comcast.net



**Thompson, Jim (Diana)**  
 15545 Rolling Meadows Cir  
 Wellington 33414-9087

Home: 561-753-9331  
 Cell: N/A  
 jthompson620@comcast.net



**Tiner, Chris (Troy)**  
 14858 Horseshoe Trace  
 Wellington 33414-4032

Home: N/A  
 Cell: 561-596-7723  
 ctiner@mac.com



**Tuskes, Terrianne**  
 14569 86th Rd N  
 Loxahatchee 33470-4352

Home: N/A  
 Cell: 561-346-2617  
 petmother@aol.com



**Visconsi, Gail**  
 15560 Cedar Grove  
 Wellington 33414-6306

Home: 561-513-9429  
 Cell: 803-480-6198  
 gvisconsi@aol.com



**Walvoord, Marilyn**  
 13352 Northumberland Cir  
 Wellington 33414-8905

**Home: 561-422-5147**  
**Cell: 561-568-6648**  
 marwalv76@gmail.com



**Warshauer, Jan**  
 144 Viera Dr  
 Palm Beach Gardens 33418-1741

**Home: 561-775-6991**  
**Cell 732-859-5498**  
 jwarshauer@aol.com



**Wenham, Jim**  
 10169 Prato St  
 Wellington 33414-4392

**Home: N/A**  
**Cell: 315-882-2794**  
 hammerx48@me.com



**Wenham, Regis (Thomas)**  
 1309 Pine Valley Dr  
 Wellington 33414-6007

**Home: 561-793-3342**  
**Cell: N/A**  
 hannabeals@bellsouth.net



**Wenham, Thomas (Regis)**  
 1309 Pine Valley Dr  
 Wellington 33414-6007

**Home: 561-793-3342**  
**Cell: 561-568-2728**  
 tomwenham@bellsouth.net



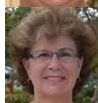
**Whitlow, Michael**  
 2070 Appaloosa Trail  
 Wellington 33414-7646

**Home: 561-795-5487**  
**Cell: 561-846-2747**  
 kilkennyins@aol.com



**Wifholm, Nancy Anne**  
 7 Colonial Club Dr, A-100  
 Boynton Beach 33414-6315

**Home: N/A**  
**Cell: 561-254-4978**  
 nancywif@bellsouth.net



**Wolfe, Maria (Jim)**  
 12346 Sawgrass Ct  
 Wellington 33414-4821

**Home: 561-790-2851**  
**Cell: 561-386-4903**  
 tcacad\_registrar@yahoo.com



**Zenker, Barbara**  
 9629 Via Grande W  
 Wellington 33411-6546

**Home: 561-795-3675**  
**Cell: 201-245-4383**  
 barbzzz@msn.com



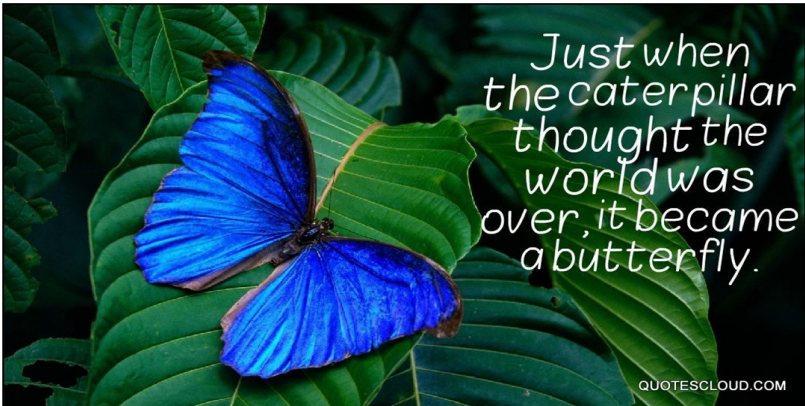
**Ziegler, Bobbi (Ronald)**  
 8837 Via Brilliante  
 Wellington 33411-6529

**Home: 561-422-7005**  
**Cell: N/A**  
 bobbironz@gmail.com



## IN MEMORIAM

Rochelle Rosen	1986	Libby Ackermann	2004
Isabel Johnson	1986	B. J. Curtis	2004
Vicki Calderone	1992	Marvin Mounts	2004
Didi Meshirer	1993	Ann Zullo	2005
Ann Vennett	1993	Irene Bishop	2006
Jean Murray	1996	Patricia Matthews	2007
Bob Blat	1999	Bruce Cook	2009
Ruth McWhorter	1999	Linda Leemon	2013
Don Courtney	2001	Beverly Miller	2013
Paula Giambrone	2002	Jeannie Allen	2013
Lori Turner	2002	Alice Mueller	2015
Peggy Amman	2002	Bonnie Wenham	2016
Helen Farmer	2003	Suzanne Rares	2016
Mary Louise LaMarche	2003	Gigi Galle	2017



## **WELLINGTON GARDEN CLUB ONGOING PROJECTS 2019-2020**

### **Adopt-a-Street**

In partnership with Wellington, club members pick up litter four times a year on a section of Greenbriar Blvd. in Wellington.

Kay Brown and Jim Thompson, Co-chairs

### **Biennial NGC Flower Show (Even-numbered years)**

The club presents an NGC flower show to stimulate interest in horticulture and floral design and to communicate NGC goals and objectives.

Twig Morris and Carol Lazzarino, Co-chairs, 2020 Flower Show

### **Biennial Garden Tour (Odd-numbered years)**

This fundraising tour of private gardens in the Wellington area benefits the club's scholarships, civic beautification and Habitat for Humanity projects. Chairs for 2021 Tour TBD

### **College Scholarships**

College scholarships are awarded each spring to high school or college students pursuing environmental, horticulture and botany undergraduate degrees. John Siena, Chair.

### **Earth Day Celebration**

Club members participate in Wellington's annual Earth Day celebration. Promote WGC, FFGC and NGC objectives, distribute Wekiva Youth Camp information and free native and/or butterfly seedlings to attendees.

Larry Grosser, Chair

### **Community Garden**

An after-school teaching garden at Wellington Boys & Girls Club is coordinated by members who provide hands-on assistance one afternoon a week from 3-5 PM. John Siena, Chair

### **FFGC Wekiva Youth Camp**

The club's fundraising activities provide annual scholarships to area youth to attend Wekiva Youth Camp.

Harriet Samuels, Chair

### **FFGC SEEK Environmental Conference**

The club offers annual scholarships and recruits area teens to attend SEEK Environmental Conference. Lisa Ferrano, Chair

### **Habitat for Humanity**

Funding and volunteer gardening expertise are offered to Habitat for Humanity homes in Palm Beach County, Lisa Ferrano, Chairs

# WELLINGTON GARDEN CLUB ONGOING PROJECTS

2019-2020 (Cont'd)

## **National Garden Week**

Organize garden-related activities and publicity to promote National Garden Week in Wellington and surrounding communities. Twig Morris, Chair

## **National Public Lands Day**

Organize community groups to participate in Wellington's annual native tree planting in observance of National Public Lands Day. Kathy Siena, Chair

## **NGC Contests**

Distribute information to local schools and encourage participation in NGC youth contests. Janet Stein, Chair

## **Wellington Environmental Preserve**

Maintain native plant and butterfly garden at Wellington's Marjory Stoneman Douglas Environmental Refuge. Kate Kouba, Chair

## **Jr./Youth Garden Clubs, Kathy Siena, Chair**

Provide guidance, teaching and/or funding for the following:

- o Aquaponic and in-ground gardening for 4<sup>th</sup> and 5<sup>th</sup> grade students at Wynnebrook Elementary School, each Wednesday afternoon from 3-5.
- o Butterfly gardening for 3<sup>rd</sup> through 5<sup>th</sup> grade students at Binks Forest Elementary School, each Wednesday afternoon from 3-5.
- o Hydroponic and raised-bed vegetable gardening for 1<sup>st</sup> through 5<sup>th</sup> grade students at Pine Jog Elementary School, at various times during the school day
- o Native plant butterfly gardening at Wellington Dog Park with Girl Scout Troop 22222 as part of ongoing troop activities
- o Installation of native plantings with Environmental Club students at Palm Beach Central High School periodically during the school year.
- o Ongoing re-landscaping of school grounds with Environmental Club students at Wellington High School, one or two times during the school year.

## **Financial Contributions to:**

FFGC SEEK (Saving the Earth's Environment through Knowledge)  
FFGC Wekiva Youth Camp Wish List  
FFGC Coral Restoration Foundation  
Mounts Botanical Garden  
NGC/USDA Forest Service Penny Pines Project  
NGC Natural Disaster Fund



## WELLINGTON GARDEN CLUB AWARDS

### FLORIDA FEDERATION OF GARDEN CLUBS (FFGC) AWARDS

**Year's Horticulture Programs** for some of the meeting speakers and all the workshops held in preparation for the 2018 standard flower show.

**Arbor Day Celebration** to restore Gene Joyner's "Incredible Acres" garden after the hurricane

**Girl Scout Arbor Day** also to restore Gene Joyner's "Incredible Acres" garden

**Standard Flower Show** in a Public Building

**Grower's Choice** won by Carol Ralph for the fabulous bromeliad she entered in the flower show

**National Poetry Contest** by Isabella Elstein, 9th grade Wellington High School

**Tree Planting Certificate** for 2,172 trees planted

### DEEP SOUTH REGION (DSR) AWARDS

**Horticulture award** for the same application submitted to FFGC for Year's Horticulture programs

**Arbor Day award** for the same application submitted to FFGC for Gene Joyner's garden

### NATIONAL GARDEN CLUBS, INC. (NGC) AWARDS

**Special Media** (Arbor Day video)

**Community Gardens at Boys & Girls Clubs**

**Organic Gardening at Boys & Girls Clubs**

**Standard Flower Show** in a Public Building

### 2018 AWARDS

### FLORIDA FEDERATION OF GARDEN CLUBS (FFGC) AWARDS

#### ADULT CLUB AWARDS

One of the top in the State of Florida for planting 7,800 trees.

Award #57-4: Birds or Butterfly Sanctuary on School Grounds for Binks Forest.

#### YOUTH AWARDS -1<sup>st</sup> PLACE

**NGC Poetry Contest "Let It Grow"**

9th Grade: Natalie Batista-Wellington High School

**NATIONAL GARDEN CLUBS, INC.**

Headquarters

Executive Director: Michelle Smith

Email: [msmith@gardenclub.org](mailto:msmith@gardenclub.org)

4401 Magnolia Avenue, St. Louis, Missouri 63110-3492

Tel: (314) 776-7574; FAX: (314) 776-5108

Email: [headquarters@gardenclub.org](mailto:headquarters@gardenclub.org)

[www.gardenclub.org](http://www.gardenclub.org)

User Name: Member Password: Conserve

**Theme: PLANT AMERICA**

Gay Austin, President 2019 - 2021

Email: [GayLAustin@gmail.com](mailto:GayLAustin@gmail.com)

405 Marion Ave, McComb, MS 39648-2709

Home: (601) 684-3952; Cell: (601) 248-7661

**DEEP SOUTH REGION**

Lena Bateman, Director 2019 - 2021

199 Weecama Rd, Ferriday, LA 71334-4510

Home: (318) 757-6332, Cell: (318) 201-9960

Email: [lbateman6332@gmail.com](mailto:lbateman6332@gmail.com)

[www.dsgardenclubs.org](http://www.dsgardenclubs.org)

**Theme: GET BACK TO NATURE, DSGC**

**Project: NATIVE PLANTS, LITTER CONTROL AND YOUTH**

**FLORIDA FEDERATION OF GARDEN CLUBS, INC.**

Headquarters

Office Manager, Liea Ward

1400 S. Denning Drive, Winter Park, Florida 32789-5662

Tel: (407) 647-7016; FAX: (407) 647-5479

Email: [ffgc@ffgcmail.com](mailto:ffgc@ffgcmail.com)

[www.ffgc.org](http://www.ffgc.org) or [www.ffgc.wildapricot.org](http://www.ffgc.wildapricot.org)

Password: Member's Profile Password

Albert (Al) Latina, President 2019- 2021

7002 Doreen Street, Tampa, Fl 33617-8437

Email: [al latina1@tampabay.rr.com](mailto:al latina1@tampabay.rr.com)

Phone: (813) 813-6794, Cell: (813) 417-5542

**Theme: DIVERSITY IN THE GARDEN**

**FFGC DISTRICT X**

Carol Coleman, Director 2019 - 2021

14224 Stroller Way, Wellington, FL 33414-6812

Home: (561) 792-2290; Cell: (201) 739-2013

Email: [taxi44480@aol.com](mailto:taxi44480@aol.com) [www.districtx.org](http://www.districtx.org)

**Theme: SEEDS AND BULBS MAY START YOUR GARDENS, BUT YOUTH  
KEEPS THEM GOING**

**WELLINGTON GARDEN CLUB**  
**Articles of Association**  
**Approved April 1, Effective June 1, 2019**  
**Article 1: Name, Logo and Memberships**

**Section 1.1 *Name***

This organization shall be known as “Wellington Garden Club” (the Club or WGC).

**Section 1.2 *Logo***

The Club has the flower Allamanda (*Allamanda cathartica*) as its logo.

**Section 1.3 *State, Regional and National Memberships***

The Club is an independent garden club, a member of Florida Federation of Garden Clubs (FFGC), Deep South Region (DSR) and National Garden Clubs (NGC).

**Article 2: Mission Statement and Motto**

**Section 2.1 *Mission Statement***

The mission of the Club, a 501(c)(3) nonprofit organization, is to further the education of the members and the public in the fields of gardening, horticulture, botany, floral design, landscape design, environmental awareness through the conservation of natural resources, civic beautification, nature studies, and to instill in our youth the love of gardening and the respect and protection of the environment.

**Section 2.2 *Motto***

The Club’s motto is “Gardening Makes a World of Difference.”

**Article 3: Membership**

**Section 3.1 *Eligibility***

Membership eligibility shall be open to all interested persons. There shall be no limit to the number of members, and any individual shall be eligible for membership on a non-discriminatory basis without regard to race, color, national origin, religion, ancestry, sex, age, marital status, sexual orientation or disability.

**Section 3.2 *Guests***

Guests are welcome at all times. Non-members may attend only two meetings as a guest.

**Section 3.3 *Active Members***

Only **active** members may vote. An **active** member is one whose dues are paid, and who takes an active part in various activities of the Club.

**Section 3.4 *FFGC Life Membership***

An honorary Life Membership in FFGC may be conferred on an active member who upholds the principles and promotes the purposes of the Club and FFGC in an outstanding way. Such individuals are recommended to the Board of Directors for consideration.

**Article 4: Dues**

**Section 4.1 *Fiscal Year***

The fiscal year begins on June 1st and runs to the following May 31st.

**Section 4.2 *Annual Dues***

The Club dues shall be forty-five dollars (\$45.00) for an individual and sixty five dollars (\$65.00) for a couple. Paid dues shall be for the fiscal year. Dues are broken down as follows:

	<i>Individual</i>	<i>Couple</i>
Wellington Garden Club	\$32.50	\$50.00
District X	\$0.50	\$1.00
Florida Federation of Garden Clubs	\$12.00	\$14.00

**Section 4.3 *Full and Partial Dues***

Incoming members must pay full membership dues (WGC, District X, and FFGC) if they join the Club between the months of April through December. New members joining during the months of January through March only pay FFGC and District X portion of the total dues.

**Section 4.4 *Payment***

Dues shall be submitted to the Treasurer for the upcoming fiscal year beginning April 1st and no later than April 30.

**Section 4.5 *Delinquency***

Members whose dues are delinquent as of June 1st, and who have been duly notified, shall be automatically dropped from the membership rolls of the Club, District X, and FFGC. A delinquent member shall be reinstated only after complying with Section 4.2 of this article.

## **Article 5: Meetings**

There shall be one general membership meeting on the first Monday of the month, September through November and January through April, unless otherwise notified. The holiday luncheon shall be a social event with no business meeting. The spring luncheon may include approval of the budget. The President may call a special meeting of the membership. Business may be conducted by majority rule at a meeting at which there is a quorum.

## **Article 6: Quorum**

A quorum of a membership meeting shall be one-third (1/3) of the paid membership.

## **Article 7: Parliamentary Authority**

The Parliamentarian shall be appointed by the President. “Robert’s Rules of Order, Newly Revised 11th Edition” shall be the authority, and govern the Club in the business procedures on all points not covered by these Articles of Association.

## **Article 8: Officers**

### **Section 8.1 *Officers***

The Officers shall include the President, the First Vice President, the Second Vice President, the Treasurer, the Assistant Treasurer, the Recording Secretary, the Corresponding Secretary, the Parliamentarian (appointed by the President), and the immediate Former President, *ex-officio*.

### **Section 8.2 *Election and Term of Office***

Officers shall be elected in the odd year by the membership at the regularly scheduled April meeting. To hold office, one must have been an active member for at least one year. Officers shall be elected for a term of two (2) years, with the exception of the Treasurer and Assistant Treasurer, whose terms shall be limited to two (2) consecutive terms. No other officer may be elected for more than one (1) consecutive term in the same office. At the expiration of their terms of office, the Officers shall turn over to their successors all records of their Offices.

### **Section 8.3 *Installation***

Officers shall be installed in May, and begin their term as of June 1st. It is intended that during the period of time after installation until June 1st, the outgoing officers shall assist the newly elected officers in assuming their positions



## **Section 8.4 *Officers' Duties and Responsibilities***

### **Section 8.4.a *President***

The President shall preside at all membership and Board of Directors meetings, shall appoint the Parliamentarian, Standing Committee Chairs and shall be authorized to sign checks in the absence of the Treasurer and the Assistant Treasurer. The President shall be a member *ex-officio* of all committees, except the nominating committee, and shall work closely with the appointed chairs. The President shall call special meetings of the Officers, Board of Directors, committee chairs, and the membership when deemed necessary. The President shall be responsible for all legal documents that shall be kept in the Club files and shall maintain the list of duties and responsibilities pertinent to committees.

### **Section 8.4.b *First Vice President***

The First Vice President shall work with the President in all matters pertaining to the operating efficiency of the Club, and conduct business of the Club in the absence of the President. The First Vice President shall assist the Second Vice President in the selection of programs for the fiscal year. The First Vice President shall report directly to the President. It is intended that the First Vice President shall succeed the President. It shall be the duty of the First Vice President to order a Past President's Pin to be given to the President at the end of his/her term of office. The pin shall be presented to the President at the May meeting at the expiration of the President's term of office, and the President's Pin shall be given to the incoming President.

### **Section 8.4.c *Second Vice President***

The Second Vice President shall chair the Program Committee. The Second Vice President shall arrange for the upcoming club year's programs before July 15th, being careful not to repeat topic programs in consecutive years. Confirmation letters are mailed or sent electronically immediately after a speaker has been invited and scheduled, with a reminder phone call or electronic notification two weeks prior to the scheduled date. A small gift or honorarium is presented to the speaker (or the organization the speaker represents) on the day of his/her appearance and a thank you note is provided. The Second Vice President assists in duties related to the office of the President as requested, and assumes the duties of the President and the First Vice President in the simultaneous absence of both of these officers. The Second Vice President is not obligated to succeed to First Vice President.

### **Section 8.4.d *Treasurer***

The Treasurer shall keep an accurate account of all money received. All money coming into the Club shall go to the Treasurer, unless otherwise stipulated by the President. The funds of the Club shall be deposited in such banks as may be designated by the Board of Directors. All monies to be disbursed shall be

transacted by the Treasurer and in agreement with the Board of Directors. The Treasurer shall sign warrants and contracts. The Assistant Treasurer followed by the President shall act as alternates in the absence of the Treasurer and have instruction on how to withdraw funds. The Treasurer shall chair the Finance Committee. All checks drawn upon the funds of the Club shall require the signature of the Treasurer or the Assistant Treasurer or the President. The books of the Treasurer shall be reviewed by the CPA within 60 days of the close of the fiscal year. Receipts must accompany a request for reimbursement, unless approved by the President. Any expenditure within a given budget account that exceeds the budgeted amount by more than \$75, must receive prior board approval. At the expiration of the Treasurer's term(s), all funds, assets, and records of the Club shall be turned over to the successor.

**Section 8.4.e *Assistant Treasurer***

The Assistant Treasurer shall serve at the direction of the Treasurer. The Assistant Treasurer and President shall act as alternates in the absence of the Treasurer. All checks drawn upon funds of the Club shall require one signature of the Treasurer or the Assistant Treasurer or the President. He/she shall send dues notices by March 15th via USPS, electronic notice or inclusion in the *Allamanda News*.

**Section 8.4.f *Recording Secretary***

The Recording Secretary shall keep records of the meetings of the Club, be custodian of all records and papers pertaining to this office, and present any recommendations from the Board to the membership. The Recording Secretary shall collect and attach to the minutes of the monthly meetings written reports submitted by officers and committee chairs who addressed the meeting. The minutes shall be forwarded to the webmaster for posting and shall be held on file for five fiscal years.

**Section 8.4.g *Corresponding Secretary***

The Corresponding Secretary shall conduct all correspondence as instructed by the President, keep all letters on file, and read incoming correspondence at membership meetings.

**Section 8.4.h *Parliamentarian***

The Parliamentarian shall assist the President on points of parliamentary procedure and fulfill the required duties as outlined in "Robert's Rules of Order, Newly Revised 11th Edition".

### **Section 8.5 *Officers Duties and Responsibilities***

It shall be the duty of the Officers to transact business requiring immediate action, either in session or by electronic polling between meetings of the Board of Directors in accordance with Standing Rule 12. The President shall make every effort to contact all members of the Officers. The Officers shall submit a full report at the next regular meeting of the Board of Directors for ratification.

### **Section 8.5a *Meetings***

The Officers become the Executive Committee (EC) when the President calls a special meeting of the Officers.

### **Section 8.6 *Quorum***

Officers business may be conducted by majority rule at a meeting at which there is a quorum consisting of five (5) voting officers.

### **Section 8.7 *Vacancy and Resignation***

#### **Section 8.7.a *Vacancy***

An Officer's position shall be declared vacant if the member is unable to perform the duties outlined above. If a vacancy occurs in the office of the President, the First Vice President shall succeed to the office. All vacancies among other Officers members shall be filled for the unexpired term by appointment by the President with the approval of the Board of Directors.

#### **Section 8.7.b *Resignation***

A letter of resignation must be submitted in writing to the President as soon as the Officer becomes aware that he/she must resign. A resignation vacancy shall be filled for the unexpired term by appointment by the President with the approval of the Board of Directors.

## **Article 9: Board of Directors**

### **Section 9.1.a *Board Membership***

The Board of Directors shall consist of all the officers of the Club, committee chairs and two (2) members at large elected by the Board of Directors by majority vote at their first meeting of the club year. The President shall be the Chair.

### **Section 9.1.b. *Duties and Responsibilities***

Ensure that the organization's mission is carried out in an efficient manner, assure adequate fundraising to accomplish the organization's mission, provide fiduciary oversight, set policy, create and periodically update the organizations strategic objective.

### **Section 9.2 *Management***

The management of the Club shall be vested with the Board of Directors. The Board transacts the general business of the Club and considers all questions of policy.

### **Section 9.3 *New Major Projects/Activities***

Major policy matters or new major projects and/or activities shall be presented as a recommendation by the Board of Directors. Approval by a two-thirds (2/3) vote of the membership present at any general membership meeting is required before further action by the Board of Directors. Any commitment involving nonbudgeted disbursements from the Club of more than three hundred dollars (\$300.00) shall be classified as a major project or activity.

### **Section 9.4 *Meetings***

There shall be a monthly meeting of the Board of Directors the week preceding the general membership meeting unless otherwise notified.

### **Section 9.5 *Quorum***

A quorum at any Board of Directors meeting shall consist of one-third (1/3) of the members of the Board. A majority of such quorum shall decide any question that comes before the meeting.

### **Section 9.6 *Reports & Transition***

Each officer and chair of each committee must submit a written annual report to the President by May 1st or upon resignation. Each officer and chair shall turn over to his/her successor or to the President such books or reports pertinent to his/her office upon expiration or within two weeks of the completion of his/her term or resignation.

## **Article 10: Committee Chairs**

### **Section 10.1 *Committee Chairs***

The President appoints committee chairs. Committee chairs who wish to address the membership at the monthly general membership or Board of Directors meetings shall submit a written report to the Recording Secretary for attachment to the minutes of the meeting. Each committee chair shall submit a year-end written report to the President, a current or updated list of duties and responsibilities and may make recommendations to the Board of Directors. All chairs shall receive a copy of the current budget to determine the maximum amount of Club funds each committee can spend. The chairs are responsible for keeping accurate records and not exceeding the budgeted amount. Receipts along with expense forms must be submitted to the Treasurer for member reimbursement. Each committee chair shall provide an estimate of their budgetary needs to the Finance Committee by March 15th for the following fiscal year.

### **Section 10.2 *Resignation of Committee Chairs***

Chairs shall submit a letter of resignation, with advance notice if possible, to the President. Within two weeks of resignation, the chair shall submit a year-to-date written report to the President and a current or updated list of duties and responsibilities.

### **Section 10.3 *Committee Members***

Committee members are selected by the committee chairs for their expertise and interest.

## **Article 11: Standing Committees**

The President shall appoint Standing Committees not provided for in the Articles of Association. The Standing Committee shall remain in existence unless dissolved by the President and ratified by the Board.

### **Section 11.1 *Articles of Association Amendments and Policy Review***

The Amendments and Policy Review Committee shall consist of five members who will meet annually in January. The Chair will be an officer. The Parliamentarian and three members from the Board of Directors will serve as committee members. Willing members of the Board will notify the President of their interest in serving and the Board will vote their approval at the meeting prior to the January membership meeting.

### **Section 11.2 *Finance***

The Finance Committee shall have as its chair, the Treasurer. The President, immediate Former President, First Vice President and Assistant Treasurer will serve as committee members with input from each member of the Board of Directors who has a budget. By March 15th, each committee chair will provide a Year-To-Date expense report and a forecast for the next fiscal year. The Finance Committee shall prepare a fiscal year budget to be mailed or emailed to members in April and be voted upon at the May luncheon.

### **Section 11.3 *Newsletter***

The title of the Club newsletter is *Allamanda News*, which is derived from the Club's logo. The purpose of the newsletter (published five times per fiscal year) is to keep its members informed of club projects, upcoming events, and other news including those related to District X, FFGC, and NGC, and to provide a link for those who cannot attend meetings.

*Allamanda News* helps to expedite the business portion of the monthly meetings by bringing pertinent information to members' attention beforehand.

### **Section 11.4 *Website***

Our website will provide information accessible to the general public, expedite club members receiving information, and provide a link to members unable to attend a meeting. It will also include a link to our Club newsletter, *Allamanda News*. Any proprietary information will be password-protected.

## **Article 12: Nominating Committee**

### **Section 12.1 Selection**

At the February meeting of an election year, the President shall announce the Nominating Committee consisting of four members. The members shall be chosen as follows: the Chair shall be appointed by the President; three members shall be elected from the membership at large. No Nominating Committee member shall be eligible to serve on this committee for two consecutive terms.

### **Section 12.2 Candidates**

The Nominating Committee shall prepare a list of eligible candidates, to be read at the March meeting. Nominations shall be in order from the floor at the April meeting, immediately preceding the election of officers. All nominees must have been *active* members (see Article 3, Section 3.3) for at least one year. If there is more than one candidate for the same office, election shall be by ballot and the majority vote shall elect. If there is only one candidate for an office, the election shall be by voice vote.

### **Section 12.3 Voting Eligibility**

Only members whose dues are paid in full shall be entitled to vote at elections.

### **Section 12.4 Commencement of Duties**

The new President elected at the April meeting shall be called “President Elect” until installation at the May luncheon. All Officers elected in April will assume their duties of office as of June 1st.

## **Article 13: Amendments**

The Articles of Association may be amended after board of directors approval at any general membership meeting of the Club, where there is a quorum (see Article 6), by two-thirds (2/3) vote of members present. The proposed amendment or amendment change must be submitted in writing to all members at least two weeks in advance of the vote.

## **Article 14: Dissolution**

In the event of termination of the Wellington Garden Club in any manner or for any reason whatsoever, its assets, if any, shall be distributed to one or more civic projects of the Club or to the community government for a public purpose.

## **Article 15: Net Earnings**

No part of the net earnings of this organization shall inure to the benefit of, or be distributed to its members, trustees, officers, or other private persons, except that this organization shall be authorized and empowered to pay reasonable compensation for services rendered and to make payments

and distributions in furtherance of the purposes set forth in the mission statement hereof.

### **Article 16: Restricted Activities**

No substantial part of the activities of this organization shall be the carrying on of propaganda, or otherwise attempting to influence legislation, and this organization shall not participate in, or intervene in (including the publishing or distribution of statements) any political campaign on behalf of any candidate for public office. Notwithstanding any other provision of this document, the organization shall not carry on any other activities not permitted to be carried on

- a. by an organization exempt from Federal income tax under Section 501(c)(3) of the Internal Revenue Code, or corresponding section of any future tax code, or
- b. by an organization, contributions to which are deductible under Section 170(c)(2) of the Internal Revenue Code, or corresponding section of any future Federal tax code.

### **Article 17: Annual FFGC State Convention and District X Representation**

The President or one alternate shall represent the Club at the annual FFGC State Convention and two District X meetings per fiscal year, with all expenses paid by the Club.



## **Wellington Garden Club Policies** **Approved April 1, 2019, Effective June 1, 2019**

Matters of the Wellington Garden Club not addressed in the Articles of Association shall be covered under Policy.

Policies shall be effective when passed by a majority vote of the Board of Directors and may be amended by a majority vote of the Board of Directors at their meeting, provided a quorum is present.

The Policy Committee shall consist of five (5) members of the Board of Directors (BOD). Prior to the first BOD meeting of each new administration, the President shall appoint the Chairman. The Chairman will circulate the current policies to the new BOD prior to the first meeting of the BOD. At this meeting the BOD shall appoint the other members of the committee. All Policy Committee members are required to study and become familiar with the Articles of Association and with the existing Policies of the Wellington Garden Club.

Any member of the Wellington Garden Club desiring to propose a new policy or to alter an existing Policy should email such recommendation to the Policy Chairman of the club. The Chairman of the Policy Committee shall meet with the committee for consultation and study. If the proposal is not contrary to the Articles of Association of the Wellington Garden Club, it shall be presented to the BOD for action.

The present Standing Rules of the Wellington Garden Club shall be included and now become a part of Policy.

### **Board of Directors/Committee Chairs**

The Policies should be effective when passed by the majority vote of the BOD and may be amended by majority vote of the BOD at their meeting, provided a quorum is present. 'Two weeks' written notice will be provided to members of the BOD.

Any proposed partnership, collaboration, contract agreement, or grant request involving the Club must contain full disclosure in writing of all terms and conditions and then be reviewed in its entirety by the WGC BOD.

If business of an urgent nature occurs before the next BOD meeting electronic polling may be utilized by the Officers. Electronic voting procedure will follow the guidelines as detailed in the NGC Standing Rules entitled Electronic Mail Voting Guidelines, Oct. 2009 excluding section 1. The detailed procedure can be found on the NGC website Member section under



Bylaws and Standing Rules. User name and password for the Member section are available from the President or Parliamentarian to all WGC members.

Any unplanned expenditures must ultimately be ratified by a majority of the BOD at the very next meeting.

Committee Chairs are encouraged to actively participate in finding their replacement in cooperation with the President.

Only one co-chair is eligible to vote at a BOD meeting.

Committee members shall be selected by the Committee Chair unless otherwise specified in the Articles of Association.

Policies shall remain in force from the time of adoption until they are changed or repealed. They may be amended or repealed by a majority vote if a thirty-day notice was given, or by a 2/3 vote without notice. The results of any such action by the BOD shall be reported to the General Membership at the following General Meeting.

In the event that a Member-at-Large is unable to serve, the BOD, with permission of the nominee shall elect a replacement to fill the vacancy.

Any member intending to apply for a grant shall present the concept to the BOD for authorization to proceed with preparation of a grant application. Prior to its submission, the grant application package shall be reviewed and approved by the President or the President's designee.

In Article 11, Section 11.2, "Input from the BOD" may include, but not limited to, former presidents and treasurers.

All Chairmen will receive a copy of the current budget, from the President, to determine the maximum amount of Garden Club funds each committee can spend. The chairman is responsible for keeping accurate records and not exceeding the budgeted amount. Receipts are necessary for Garden Club reimbursement.

If an Officer or BOD member is unable to attend a BOD Meeting, their report shall be sent to the President prior to such meeting.

Committee chairs will be created and be functioning by the first meeting of the fiscal year.

## **President**

A copy of the Book of Information (BOI) shall be given to the President and the First Vice President.

A standard agenda as found in Roberts Rules will be used to provide information as well as allow for full participation of the members.

If available, agenda items will include backup or support material for members to review prior to the meeting.

Club members may request that the President add an agenda item for discussion at either a BOD meeting or a general membership meeting. A minimum of seven days notice is requested.

An Inventory Manager will be appointed by the President each term.

The president shall share with committee chairs their budgeted line item and their specific committee responsibilities.

The President shall determine, when two members heading up a committee, are either co-chairs or Chair & Vice Chair.

## **Treasurer/Assistant Treasurer**

Requests for approved expense reimbursements can be submitted via printed format or electronically by email to the Treasurer. The Treasurer is required to pay all approved expenses upon receipt.

A maximum reimbursement of \$100/fiscal year will be allowed for approved education courses per member.

Makes all investments and reinvestments at the direction of the BOD upon recommendation of the Finance Committee.

Provides reports of fundraising activities to the BOD based upon income and expense reports submitted by the event chairs.

Files all required Tax Reports in a timely manner.

**Finance Committee Duties:** 1) to advise the BOD in all matters financial, 2) to maintain continuous review of the Club's financial status, 3) to recommend measures to maintain the fiscal health of the Club, and requests Committee Chair proposed budgets before finalizing the new fiscal year budget.

Tax deductible contributions to WGC are welcome from members of the public. Acknowledgements shall be provided by the Treasurer who may delegate this responsibility to the Corresponding Secretary or the Chair of the fundraising event.

### **Parliamentarian**

Motion forms shall be provided to members making a motion.

### **Membership**

The membership roster with names, addresses, e-mail addresses and phone numbers shall not be given out to businesses or organizations for purposes of solicitation or promotion. The e-mail mailing distribution list of the club members shall be used exclusively for communication of Federated Garden Club and garden associated business. Any member may send a qualified email message using the distribution list to all the other club members. However, all messages sent via the distribution list will be monitored and/or reviewed by the president or the president's designee from the BOD.

Businesses and individuals may advertise in *Allamanda News*, the Wellington Garden Club newsletter, via the Advertising Editor, at rates to be established on an annual basis by the BOD.

Courtesy and consideration should be given to officers, speakers, and attending members while any Club business or presentation is given.

No political speeches shall be made at any Garden Club meeting by a member, guest, or invited speaker.

An amount of twenty-five dollars (\$25.00) shall be awarded on a yearly basis to the winner of the FFGC J.4 Youth Conservation Award.

Financial aid, with a maximum amount of 50% per course or educational event with a total reimbursement of \$100 per member per fiscal year, may be available to help members defray the cost of attending a National Garden Club (NGC) or Florida Federation of Garden Clubs (FFGC) -sponsored educational course or be used toward tuition for a degree or certificate in a field of study that supports the club's Mission as outlined in Article 2 of the Articles of Association. Members, who receive reimbursement, as approved by the BOD, are expected to share the knowledge gained by chairing a committee, presenting a program or writing an article for the club newsletter, Allamanda News.

Membership applications and records shall be handled and maintained by the Membership Committee. The new member application processor will provide these documents via email or hard copy to the Mentor Chair.

Copies of the Membership spreadsheet shall be distributed to the BOD to encourage involvement of new and current members in Club activities.

New members joining in March or April will enjoy these 2 months as members and the membership dues paid will apply to the following full club year.

Members rejoining the Club after a period of absence will be recognized at their first meeting as a former member.

New members to the WGC will be asked to introduce themselves at their first meeting.

New Member Reception/Orientation is to follow the suggested agenda.

*A brunch is to be held at a member's home.*

*Hostess will provide coffee & tea*

*Officers & Committee Chairs will provide juice, fruit and pastries, etc. and paper goods.*

*Agenda:*

*Welcome by President*

*Introduction of Officers and Committee Chairs*

*NGC Video presentation*

*Committee Chair presentations*

*Mentors introduce new members*

*Sign up for committees (need a form)*

All members are encouraged to participate in the work of the Club by participating on a committee, contributing to fundraisers that support our mission and by frequently attending programs, workshops and Around & Abouts.

Eligibility for voting for officers or on an Articles Amendments requires that dues are paid in full prior to the date the vote is to take place. Prior knowledge of the qualifications or issues is required for informed voting.

Members may not solicit the membership or sell items to the membership for monetary gain.

## **Meetings**

All meetings of the WGC are open to all club members. Meeting participation is guided by Roberts Rules of order, Newly Revised, 11<sup>th</sup> Edition.

General Membership Meetings and BOD Meetings agendas will be emailed to the membership.

## **New Member Orientation**

A mentor will be assigned to each new member. The mentor will receive a copy of the new member application.

All new members will attend a new member orientation within the first year of their membership.

The mentor will encourage new member participation on at least one committee.

## **Fundraisers**

All fundraising plans regarding the sale of an item to club members shall include full disclosure regarding cost and surcharge and be approved by the BOD before being submitted to the Finance Committee for inclusion in the budget.

## **Inventory**

All tangible or reusable items purchased for and reimbursed by the Club for a Club event will be added to the Club's inventory list and stored in a safe and protected location. This listing will be posted on the website in the Member Resources area and given to committee chairs at the beginning of each year by the Inventory Manager.

## **Youth Activities**

Youth activities will be evaluated annually.

## DONATIONS TO THE WELLINGTON LIBRARY

- Billington, Jill: *Really Small Gardens: A Practical Guide to Gardening in a Truly Small Space*
- Botanica: *The Illustrated A-Z of Over 10,000 Garden Plants*
- Bowman, Daria Price: *For Your Garden: Paths and Walkways*
- Complete 8-Title Video Series: *Gardens of the World with Audrey Hepburn*
- Crawford, Pamela: *Best Garden Color for Florida*
- Crawford, Pamela: *Easy Gardens for South Florida*
- Crawford, Pamela: *Instant Container Gardens*
- Crawford, Pamela: *Easy Container Gardens*
- Crawford, Pamela: *Easy Container Combos: Vegetables & Flowers*
- Crawford, Pamela: *Container Gardens for Florida*
- Crawford, Pamela: *Stormscaping: Landscaping to minimize wind damage in Florida*
- Darke, Rick: *The Color Encyclopedia of Ornamental Grasses*
- Dirr, Michael: *Dirr's Trees and Shrubs for Warm Climates*
- Herwig, Modeste: *Colorful Gardens: contrast & combine your plants & flowers for spectacular visual effects*
- Hessayon Dr., D.G.: *The Flower Arranging Expert*
- Jenkins, Mary Zuazua: *National Geographic Guide to America's Public Gardens*
- McDonald, Elvin: *Gardens of the World: The Art and Practice of Gardening*
- Moore, Brenda & Ohlmann, Jean: *The Frightened Frog*
- Moore, Brenda: *The Saved Seed*
- Pridgeon, Alec, ed: *The Illustrated Encyclopedia of Orchids*
- Rogers, George, PhD, ed: *Weeds of South Florida*
- Sutherland, Neil: *Step by Step Guide to Creative Patio and Container Gardening*
- Toogood, Alan (Ed.-in-Chief): *Plant Propagation*
- Welch, Wm. C.: *Antique Roses for the South*

Florida Federation of Garden Clubs, Inc.  
District X

**Tropical Adventures**  
**64th Annual**

**TROPICAL SHORT COURSE**

Mounts Botanical Garden  
West Palm Beach

*A Tri-Refresher*

**January 22-23, 2020**

Come, adventure with our  
speakers, demonstrations and  
vendors who will  
educate, entertain  
and enlighten you.

Landscape Design  
Horticulture  
Environmental Topics  
Floral Design  
Guided walks through  
Mounts Botanical Garden

Registration is open to all garden  
club members, friends and family.

**Barbara Hadsell**

**Chairman**

**barbarahadsell@cs.com**

**561-635-8809**

For more information and a registration form go to: [www.districtx.org](http://www.districtx.org)

Registrar: Tuula Villavaso, 268 Flamingo Drive, WPB, FL 33401  
Numbered seating by date of registration.



# Wellington Garden Club

Presents

## “It’s a Small World”

An NGC Petite Standard Flower Show



February 28 - March 1st, 2020

**THE MALL AT  
WELLINGTON GREEN**

# SAVE THE DATE!

STAY TUNED FOR MORE DETAILS