



Allamanda News

The Newsletter of the Wellington Garden Club

JAN/FEB 2017

PRESIDENT'S MESSAGE

Dear Members:



We have just finished our 2016 club year. To recap, we had our September members only meeting to vote and approve our Revised Articles of Association. Our October 5th meeting was cancelled because of the threat of Hurricane Matthew. In spite of that, an exciting and educational members meeting was held on November 7 with about 100 people attending. Our wonderful "western" holiday luncheon took place at Mayacoo Lakes Golf and

Country Club with about 100 guests and members attending and what a super job our luncheon committee did! In between these activities, we had educational workshops for our members, coastal cleanups, tree plantings, adopt-a-street cleanups, new board meetings, around & about events, NGC schools, youth garden and youth contest activities. We are certainly a very involved and active club. The welcomed addition of new members brings our membership total to 146. That is outstanding!

Thank you to our new Board of Directors, which consists of our Executive Committee Officers, our Committee Chairs and our two new Members at Large, and especially thank you to our members for helping us start off the garden club year with a bang. Be sure to sign up for new Around & About events and Tropical Short Course. Lots more to follow....stay tuned We love our new Community Center Lakeview Room, and many thanks to the Village for all of their hard work getting us set up for our meetings.

Hope you have had a wonderful holiday time so far and your President wishes you all a Happy New Year for 2017. Be safe, enjoy your gardens and relax by the fireplace as you envision the snow falling outside your window, only to step outside and face the reality of spectacular warm and sunny weather here in Palm Beach County. Be thankful for our blessings and good cheer to all! See you on Tuesday, January 3rd at the next Members Meeting.

Kathy

"Nurture our gardens, ourselves and our leaders of tomorrow."

GC CALENDAR OF EVENTS - JANUARY – FEBRUARY 2017

Jan 3, Tues*	Garden Club Meeting – Wellington Community Center (9:30 AM)
Jan 10	Adopt-a-Street – Wellington Dog Park (9:00 AM)
Jan 11-12 Wed-Thurs)	FFGC Board Meeting – Winter Park Days 1 – 2
Jan 12	Floral Design Workshop – Village Park (9:00 AM-2:30 PM)
Jan 19	Wellington Community Landscape Maintenance (8:30 AM)
Jan 20	Florida Arbor Day
Jan 23	Around & About – Gene Joyner’s “Unbelievable Acres” – WPB
Jan 25-26 (Wed-Thurs)	61 st Annual Tropical Short Course – Mounts Botanical Garden, WPB Days 1 – 2
Jan 31	Board Meeting – Wellington Community Center (9:00 – 10:30 AM)
Feb 3-5 (Fri-Sun)	Wekiva Leadership Training, Apopka Days 1 -3
Feb 6	Garden Club Meeting – Wellington Community Center (9:30 AM) *Speaker-Susan Lerner
Feb 9	Garden Art Workshop – Fire Station 30 (9:00 AM – 1:00 PM)
Feb 16	Floral Design Workshop – Village Park (9:00 AM – 2:30 PM)
Feb 16	Wellington Community Landscape Maintenance (8:30 AM)
Feb 21	Around & About – Wakodahatchee Wetlands, Delray Beach
Feb 28	Board Meeting – Wellington Community Center (9:00 – 10:30 AM)

*Note Change

TREASURER’S REPORT

By Danese Sloan-Kendall, Treasurer

December 1, 2016

Wellington Garden Club began November 1, 2016 with a checking account balance of \$25,423.84.

Income since then totaled \$3,380.77 primarily from floral design and garden art and holiday luncheon.

Expenses since November 1st were \$1,957.97 primarily for member education and floral design and garden art.

Additionally, for more detailed information the WGC profit & loss versus annual budget report will be emailed.

Current balance as of November 30, 2016 in the Wellington Garden Club checking account is \$26,846.64.

WGC MEETING – Tuesday, January 3, 2017

Our Pollinators: Butterflies and Bees

Teri Jabour

tjabour@att.net



Speaking about “Our Pollinators: Butterflies and Bees” is always special for Teri. Having lived in Florida for 41 years, Teri appreciates Florida’s unique ecosystems as well as their eminent threats and substantial losses. She has been involved in the community over the years as an advocate and educator about sustainability issues and natural resource protection. Teri worked for



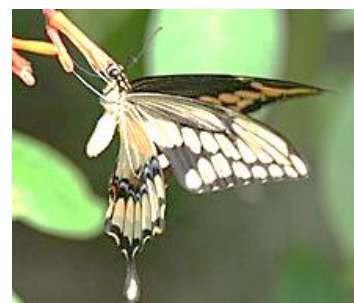
several years at The Nature Conservancy’s Blowing Rocks Preserve on Jupiter Island, as program coordinator at Grassy Waters Preserve, for the West Palm Beach County Office of Sustainability and with the Atala Chapter of the North American Butterfly Association (NABA). Teri is President of the Atala Chapter and continues to be active with the chapter participating in butterfly surveys and educating others about butterfly conservation and butterfly gardening. Her experience for the past 20 years as a Master Gardener with the University of Florida/IFAS, Palm Beach County Extension Service further enables her to continue learning about South Florida’s flora and fauna and sharing that passion with others.

WGC MEETING – Monday, February 6, 2017

Gardening with Native Plants

Susan Lerner

VitalLongevity@gmail.com



Susan Lerner is a Florida Master Gardener, President of the Palm Beach County Chapter of the Florida Native Plant Society, Past President of the Palm Beach Chapter of the Rare Fruit Council International, and Secretary of the Florida Backyard Beekeepers Association. Her half-acre West Palm Beach yard is planted with hundreds of Florida native plants, over two dozen fruit trees and other edibles – enough to keep her, the bees, birds & butterflies, fed year-round.

Susan has presented talks about native plants, fruit trees, and pollinators to various groups throughout South Florida. Her PowerPoint presentation for the Wellington Garden Club will focus on *Gardening, naturally, with Florida’s best – Native Plants*.

AROUND & ABOUT EVENTS

By Kimberly Helms, Chair

Gene Joyner's Unbelievable Acres
Monday, January 23, 2017
470 63rd Trail N., West Palm Beach, FL 33413
<http://www.unbelievableacresbotanicalgarden.org/>



You'll walk in wonder under the one-hundred-foot canopy of the only working rain forest in the USA. The garden is owned by Gene Joyner. Gene is a graduate of the University of Florida and has been a Palm Beach Extension Agent Extraordinaire for



thirty-five years. He has also taught the Master Gardener Classes. You will be treated to over 2000 varieties of plants from orchids to exotic fruit trees such as: Jaboticaba, Black Sapote, Jackfruit, and Carambola.

Cost: \$10.00

Tour: 10:00 to 11:00 AM

LUNCH: Optional

CARPOOL: West – Wellington Community Center Parking lot: Leave 9:15 Sharp
East IHOP 6708 Forest Hill Blvd: Leave 9:15 Sharp

Contact: Kimberly Helms kimberlyskreations@icloud.com; phone 561.350.8681

Wakodahatchee Wetlands: Environmental Trip

Tuesday, February 21, 2017

13026 Jog Road, Delray Beach, FL 33484

<http://www.pbcgov.com/waterutilities/wakodahatchee/>



We will meander through what was once 50 acres of undeveloped utility land that has been transformed into a haven for water birds and other wildlife. We will see numerous migratory birds in various stages of nesting. Some of the birds you will see are cormorants, herons, wrens, thrashers, limpkins, coots, warblers, hawks, waxwings, and tanagers. The



tour is guided but you can leave at your convenience. There are numerous benches and gazebos to rest throughout the site. **Bring binoculars if you have them!**

Cost: Free

Tour: 10:00 to 12:00 AM

LUNCH: Optional

CARPOOL: West – Wellington Community Center Parking lot: Leave 9:15 Sharp
East IHOP 6708 Forest Hill Blvd: Leave 9:15 Sharp

Contact: Kimberly Helms kimberlyskreations@icloud.com; phone 561.350.8681

DON'T FORGET TO REGISTER FOR TROPICAL SHORT COURSE JANUARY 25 & 26 at Mounts Botanical Garden

What is Tropical Short Course?

The Florida Federation of Garden Clubs did a survey last year. Do you know what the number one reason was for joining a garden club? Education!! People want to learn about gardening, nature, and design. Tropical Short Course covers all this!!

The organizers of Tropical Short Course work hard to obtain people who can make presentations on issues that are relevant in our community. For instance, we all hear about using native plants in the landscape. This year's short course covers *why* this is important and gets into *how* this can be done in your backyard and garden, and how to make it look like a garden right out of a magazine!

We see construction of man-made islands in the Intracoastal Waterway. We hear in the news about the use of our tax dollars on these constructions projects. Well what are they, and are they something that is of value to the average person? Tropical Short Course has the County's Environmental Resource Management Director speaking on these vital projects.

What good are those great big dragonflies? Should I be afraid of them? A presentation is planned on dragonflies and how they benefit YOU.

Then, we all want to make our homes more welcoming, brighter, and we want to try our hand at design. Tropical Short Course will have three top-notch designers showing how you can bring Florida's native plants into your home, right from your backyard, and incorporate them into floral designs. Susan Hillson and Christine Biscoglio, Wellington Garden Club members and accredited flower show judges, are two of the floral design presenters at the Tropical Short Course.

Tropical Short Course is organized with you, the garden club member, in mind. As you've heard, it's designed to be informative, fun, and a great value for your money and time. These are subjects that you can take home and tell your friends and neighbors about, because they have meaning to all of us.

We invite garden club members and non-members alike. So bring your friends, neighbors and family. Don't forget the great vendors and our fun raffles!

Registration can be made at www.districtsx.org, just look under "Educational Opportunities" for an interactive registration form, or print out the form on the following page and send it to the registrar, Dale Hesser, as shown on the registration form.

DON'T PROCRASTINATE – Registration deadline is January 11. A \$5.00 late fee will apply after that date.

REMEMBER – WGC will reimburse the entire cost of the course. Just complete the Educational Reimbursement Form found on our website.

REGISTRATION FORM

District X of The Florida Federation of Garden Clubs

61st ANNUAL TROPICAL SHORT COURSE

Tropical Destinations

Wednesday and Thursday

January 25 – 26, 2017

Mounts Botanical Garden, West Palm Beach, Florida

Print Name: _____

Address: _____

City: _____ State: _____ ZIP: _____

Phone: _____ Email: _____

Garden Club: _____ District: _____ State: _____

Are You a Master Gardener? Yes No

\$60 Complete Two-Day Course, FFGC/NGC Members *(add \$10 for Late Registration)*

\$70 Complete Two-Day Course, No FFGC/NGC Affiliation *(add \$10 for Late Registration)*

\$35 Wednesday Only – FFGC/NGC Member *(add \$5 for Late Registration)*

\$40 Wednesday Only – No FFGC/NGC Affiliation *(add \$5 for Late Registration)*

\$35 Thursday Only – FFGC/NGC Member *(add \$5 for Late Registration)*

\$40 Thursday Only – No FFGC/NGC Affiliation *(add \$5 for Late Registration)*

Late Registration postmarked after Jan 11, 2017 ~ No Refunds after Jan 20th

Box Lunch included each day of registration ~ Numbered seating by date of registration

Make Checks Payable to: FFGC – District X

Please print and mail to:

TOTAL PAYMENT ENCLOSED: \$ _____

Dale Hesser
1634 South Club Drive
Wellington, FL 33414

Go to www.DistrictX.org to fill out this form.



WEKIVA



**HEAR YE! HEAR YE!!
WEKIVA NEWS**

**WILL THE YOUNGSTERS IN YOUR LIFE
BE WEKIVA CAMPERS ?**

Outside the big city of Orlando lies Wekiwa Spring State Park, a park of large oaks with hanging moss, pines and palmetto. Inside the park is Wekiva Youth Camp, a camp for Kindergarten through 8th graders. From mid-June through July, campers attend for a week to take part in programs led by adult garden club volunteers. The programs emphasize nature study, conservation, and crafts. Several of our club members have attended the leadership training weekend where they learned teaching strategies for working with children. Once again this year, Wellington Garden Club will be awarding scholarships to several campers, paying a portion of their tuition costs. We have also made financial donations to the Wekiva Building Fund and are an active participant in the Labels for Education program which helps pay for supplies for the camp.

OPPORTUNITY FOR 2017 WEKIVA CAMPERSHIPS

Are you interested in registering your youngsters -- children, grandchildren, great grandchildren, neighbor's children, friend's children-- for next summer's Wekiva Camp? Check the Camp Wekiva website for full details. <http://www.wekivayouthcamp.org/>. Summer 2017 registration opens January 1, 2017. Upon registration, make sure you indicate that the Wellington Garden Club is your sponsor.

For further information, contact Harriet Samuels at 561-715-0950 or hiswpbwh@gmail.com.

YOUTH GARDEN CLUB NEWS

Wynbrook Junior Garden Club
By Carol Lazzarino

I had the pleasure of assisting the Wynbrook Junior Garden Club with a craft project for the holidays. The children only have about an hour after school for the Junior Garden Club every Wednesday and believe me Tim and Barbara Hadsell and Janet Stein keep them busy along with other volunteers from the garden club. They are divided up into three groups and are given the opportunity to work in the garden, help prepare the afternoon snack in the kitchen with Chef, Janet Stein and Karen Griffin, and learn to craft a gift for the holidays to take home.



The craft for the holidays was to make a Christmas tree with as many recyclable items we could find. The trees were pinecones, frosted with snow and decorated with old Mardi Gras beads. The base was recycled mini pots. The bows came from the \$ store. The children really had fun with this project.

They could really use a few more volunteers to help out from 3-4PM on Wednesdays. Watch for the sign up sheets at the meeting. You can volunteer for just one time or as many as you like. It is very rewarding for these young future gardeners.





YOUTH NEWS

By Kathy Siena

Wellington Garden Club is in full swing with our youth activities, youth contests and Smokey Bear Presentations for this garden club year. September through November were very busy months for us. A new event WGC was asked to participate in was Parent/Community Service Night at New Horizons Elementary School. Our volunteers, Bobbi Ziegler, Barbara Zenker and Debe Ewing helped support this event. WGC was honored to receive a Community Service Award by the Florida Girls Scouts of America presented to Kathy Siena by Allison Zimmerman, Girl Scout leader. WGC gave Girls Scout Troop 22222 the Wildflower Whiz Award for their work done on the native plant and butterfly garden at a park area in Wellington.



WGC President Kathy Siena and Girl Scout Troop 22222

Nurturing our youth who are also our leaders of tomorrow is very important for all of us to do. We can lead our youth to become future gardeners by exposing them to youth gardens, community gardens, environmental education, recycling and youth contests that teach them about these areas. We are proud of Maya Malec, 4th grader who won 1st place by National Garden Club, Deep South and FFGC for her Recycled Sculpture creation.



Maya Malec 1st Place winner NGC Sculpture Contest

Smokey Bear and the Florida Forest Rangers are always welcome to the schools for a visit and presentation on how to prevent forest fires. Smokey and our volunteers visited New Horizons Elementary, Equestrian Trails, Wynnebrook, and Binks Forest Elementary last October to teach the children about how to prevent forest fires and take care of our land. Here is a photo of the students giving a high five to Smokey. I encourage our members to get involved with our local youth by helping with NGC Youth Contests and Smokey Bear Presentations. It is our responsibility to nurture our children and teach them about our environment. Please talk to Kathy for information on volunteering.



Equestrian Trails Elementary School Smokey Bear Presentation October 2016.

NEWS FROM BINKS FOREST ELEMENTARY SCHOOL

By Debe Ewing

Mrs. Davis' garden club of 3rd, 4th & 5th graders at Binks Forest Elementary School has been hard at work on the courtyard between their classrooms. Some of their work includes removing old mulch and adding it to existing flowerbeds and potted plants; loading pavers in a wagon; removing old weed block cloth; leveling the ground; measuring area for pavers; adding new weed block cloth and new pavers in three plots in a beautiful pattern designed by the students. Checking each other's work in laying the pavers was a great experience when the pavers were laid horizontally and vertically. Rows were reworked and everyone worked together. The students also trimmed the paver edges with gray rocks and painted stones on the top. Finally, they added previously planted flower pots on the pavers.



They also cleaned out raised flower beds, installed new butterfly plants and new mulch. Weeding, watering and watching the excitement of these children when chrysalises were found, butterflies flew by and landed on milkweed and frogs hopped by was a delightful experience. Admiring their hard work and listening to their excitement seeing a job well done warmed my heart. All the other staff and students walking by were grateful and thank me and commented on how they appreciated my assistance. This was a blessing to be a part of this group of young gardeners.

IN MEMORIAM

Suzanne Rares

February 14, 1943 - December 21, 2016

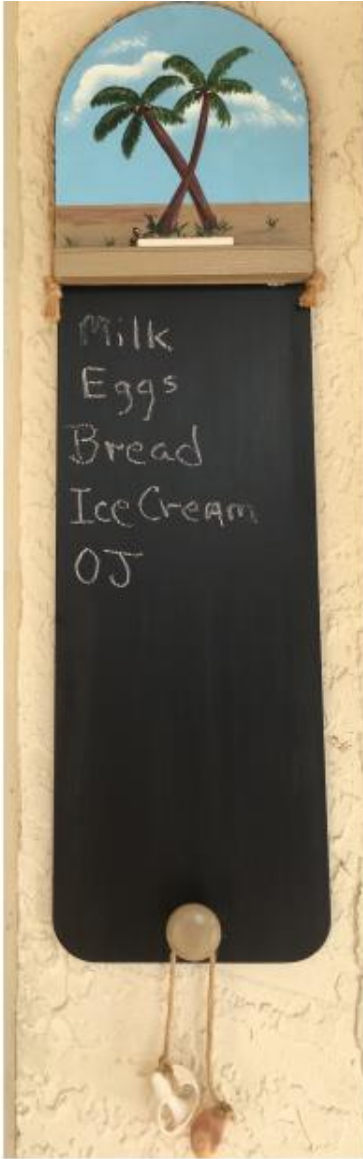
It is with deep regret that we share news of the recent and sad passing of our longtime and faithful member, Suzanne Rares.

Suzanne was the epitome of a selfless and dedicated volunteer who worked tirelessly to support the many activities of Wellington Garden Club. She served on the club's Executive Committee as Assistant Treasurer, Recording Secretary and Corresponding Secretary for a total of six years. She co-chaired multiple Holiday and Spring luncheons, held Newcomer Receptions and a superb Sunset Social at her home, served as chair of the garden docents for two biennial garden tours and made countless in-kind donations to the club's various activities. With her upbeat and fun-loving attitude she added a special note of cheer to every gathering. We will miss her always and remember her with great affection. We extend our deepest sympathy to her husband, Joe, and family.



A funeral service is scheduled for Thursday, January 5, 2017 from 12-2 pm at the Gardens of Boca Raton, 4103 N. Military Trail, Boca Raton. For more details: <http://www.legacy.com>

THURSDAY, FEBRUARY 9TH CRAFT WORKSHOP



GARDEN ART AND CRAFT CLASS
THURSDAY, FEBRUARY 9
Hand Painted Message Board
9:00AM - 1PM
Fire Station 30

The ultimate in recycling. We will repurpose an old fan blade and craft a wonderful message board. The fan blades are painted with chalkboard paint with a quick and easy lesson on painting Palm Trees. Yes you can paint this and it will be great addition for your kitchen or as a gift and lots of fun! Dee will lead you through the step by step painting lesson. They will be finished with a jute braid and shells for a tropical look.

Please sign up at the January meeting. The class will be limited to 15 people. If you can't make the meeting and want to join us, please email Carol Lazzarino clazzar586@aol.com or call 312-2082.

The class will be held at
Fire station 30
9610 Stribling Way
Wellington, FL

Carol Lazzarino and Dee Rolfe.

FLORAL DESIGN CLASS

November 10, 2016

Bernice Correra and Jayne Kieseewetter, Co-chairs



One of the many advantages of belonging to our garden club is the opportunity to learn, whether it be about tropical plants, landscaping, local resources for plant material, or some of the basics, tricks, and language of Floral Design. In the first of the six Floral Design classes this season our instructors, Chris Biscoglio and Susan Hillson, introduced us to "proper terminology" such as referring to our flowers for floral arrangements as "plant material" not "flowers." Or referring to the "soil," rather than calling it "dirt." So even those of you not interested in making arrangements may want to adopt these

terms so professionals will recognize your garden club background! And who would normally think about using a fishing tackle box for the tools needed for arrangements? Wire, scissors, floral adhesive, and flora life will all fit nicely into a tackle box. Then the *elements* and *principles* of design were reviewed., and one could deduct that keeping some of these terms (e.g. line and color, balance and scale) in the back of one's mind could be helpful in furniture and accessory placement in your own home, or styling your hair to compliment the shape of your face. If one of the *attributes* of design is *expression* of an idea, mood, or story, then our first design class proved to be a good foundation for seeing our surroundings in general. "Line" and "mass" were the guide lines for our first arrangement.



HORTICULTURE CORNER

Plant a Palm



Palms provide that tropical look to the landscape while adding to your property value. Most palms are well adapted to our soils and require minimum care to establish and maintain. Factors to consider when selecting a palm include eventual mature size, single or multi trunked and feather or fan shaped fronds. Palms can be planted year-round, though palms establish faster and with fewer problems during summer. Many palms suffer from being planted too deeply. This essentially suffocates the roots, inviting nutritional disorders, provoking insect damage and root disease. It is important to water a newly planted palm for the first several months. Support large palms with braces against the trunk for the first six months to prevent swaying during strong winds. Nails should never be used to attach braces to the trunk of palms. For more information on selecting a palm for your landscape read University of Florida publication Ornamental Palms <http://edis.ifas.ufl.edu/ep009> or call the Palm Beach County Cooperative Extension Service Master Gardener Volunteer Hotline at 561-233-1700. Article courtesy of UF Extension Service.

OUR FACEBOOK PAGE AND NEW WEBSITE

By Kathy Siena

We wish to thank our member, Linda Motzer, for maintaining our Facebook page. Linda has informed me that she is unable to continue any further work with our Facebook page. She has moved out of the Wellington area. Meanwhile, please send your photos/videos for posting to me or you can post them directly on the Wellington Garden Club Facebook page.

<https://www.facebook.com/Wellington-Garden-Club-150607948306971/>

Please take the time to go to our new website to browse the various pages. It is continually being updated and enlarged. The next new section we are working on is our Photo Gallery. I have already received some great photos from a couple of our members to post in the Photo Gallery. It is important for you to sign up, create a new user id and new password so that you have member-only access to Membership Resources. If you find any errors or have questions about our Website please let me know by email. Let me know if you having any difficulties "Joining" the Website. <http://wellingtongardenclub.org/>

PLANTS GALORE AND MORE

By Joan Kaplan, Chairman

Wellington Garden Club presents

PLANTS GALORE AND MORE



→ **FREE ADMISSION!** ←

Sunday, March 12, 2017

11 a.m. – 5 p.m.

Rain or Shine

Wellington Amphitheater Park
12100 Forest Hill Blvd., Wellington

(Approx. 2.15 miles south of Southern Blvd. OR approx. 2.2 miles west of U.S. 441)

✦ **FABULOUS PLANT SALE**

✦ **FREE SEMINARS**

✦ **Incredible Raffle**

✦ **"Ask the Experts"**

**Proceeds Benefit Our Civic Beautification, Scholarships,
Environmental and Youth Programs**

More Details: Joan Kaplan, Chairman – admiral29@aol.com or 561-628-4752

A 501(c)(3) nonprofit organization

www.wellingtongardenclub.org

On Sunday, March 12th from 11 AM to 5 PM our garden club will hold a wonderful event "PLANTS GALORE AND MORE." We need everyone's help to make this fund-raiser a success. An amazing plant sale is planned. We will have plants from local vendors and showcase our garden club's talents by selling member-grown plants. If you haven't started digging in the dirt to pot up some beautiful specimens, now is the perfect time. Come March these plants will bring in nice profits to our plant sale. If you are in need of empty pots to start your transplants, contact Stormi Bivin at 561-753-3315.

Our event also includes free seminars, an exciting raffle, activities for children, ask the experts and more. Volunteer opportunities for members include plant sale, setup and take-down, help with the raffle and seminars and general assistance.

Any questions? Call Joan Kaplan 561-628-4752.

**RECAP OF OUR HOLIDAY LUNCHEON
AT THE MAYACOO LAKES COUNTRY CLUB ON MONDAY, DECEMBER 5TH**



The Wellington Garden Club's annual holiday luncheon was more than special. Held at the Mayacoo Lakes clubhouse, the party room was transformed to represent the old west of the mid 1800's complete with saloon, jail, and sheriff.



A special thanks goes to one of our local western hangouts, "Wild West Diner" who loaned us their sculpture for the event.



Sheriff Tom Bivin deputized several of the locals to arrest and return the wanted bandits who would spend time in jail. A hefty bounty of gold or freshly printed 1800's currency was awarded for their capture.

After a delicious meal, the party goes broke out into dance led by the the Foster - Seagrave duo.

Thanks to Mary Drexler and her luncheon team volunteers for a great job.



RECAP OF WGC MEETING ON November 1, 2016

The Art of Bonsai

Jonathan Rodriguez

Furuikibonsai@gmail.com



On November 1st, Jonathan Rodriguez, an award winning bonsai artist, brought some beautiful bonsai plants to our meeting and methodically gave us an intricate talk on the how and why of Bonsai. He has been studying the



art of bonsai for over 15 years, and has studied under some of the best bonsai artists in the country.



He is also an assistant to the Bonsai Collection Curator at the Morikami Museum and Japanese garden. Jonathan has received worldwide recognition after launching his very popular Furu Ki Bonsai account on Instagram.com (@Furuikibonsai). He has been a two- time president of the Bonsai Society of the Palm Beaches and he also teaches Bonsai at Boynton Beach Community High School and Seminole Ridge High School. To say



the least, this was a very fascinating topic which was followed by questions and answers.

LEARN MORE ABOUT OUR ENVIRONMENT

Each month you will find a file holder on the back table at our general meeting titled Environmental Education. Currently it contains handouts for you to take home and read on the following

- Wellington's Top Birding Spot
- Advocacy vs. Lobbying published by National Garden Clubs, Inc.
- Adopt FL-Friendly Landscaping -an FFGC Position Paper
- Protecting FL Springs-an FFGC Position Paper
- FL State Parks-an FFGC Position Paper
- Ban Hydraulic Fracturing in FL - an FFGC Position Paper

ENVIRONMENTAL NEWS

By Diane Rice and Phil Macnak, Environmental Chairs

FFGC Represented at the Second Annual Florida Fracking Summit Meeting

by Diane Rice - District X and Wellington Garden Club Environmental Chairman

ALERT: MAKE AN IMPACT TO BAN FRACKING / WELL STIMULATION IN FLORIDA by responding immediately to your emails that start with FL Fracking - in the subject area. For details on why you should care - please read this article



Bernadette A. Hamera, First Vice President of Ft. Meyers, Lee County Garden Council, Inc. and treasurer of District IX of the Florida Federation of Garden Clubs and Diane Rice as Environmental Chairman of both Wellington Garden Club and District X met up at the Florida Fracking Summit Meeting held at Florida Gulf Coast University, Cohen Center, on November 2, 2016 in Ft. Meyers. It was a gathering of like-minded people, and even if you could not make the meeting, you can be with us in spirit by downloading and reading the reports listed on www.flfrackingsummit.org. Understanding and action on your part is important because there is a real possibility

that seismic mapping could begin on 70,000 acres in Big Cypress as early as 2017, and should they find the results promising, then fracking could be the next step. **Note**, according to Jennifer Hecker and Meredith Barnard of Conservancy of Southwest Florida, we are not supposed to call it fracking anymore but instead "well-stimulation processes" to make sure matrix acidification is included. Click for a 3 minute YouTube trailer of [Gasland](#) on Fracking / Well Stimulation.

So.. let's get this picture right! According to Noah Kuger- M.S., P.G. in his report, "[Geology of Florida: Challenges and Risks of Unconventional Oil Exploration](#)", most of Florida sits on sand, limestone and dolomite This geology is instrumental in providing the groundwater that 93% of the Floridians depend on for drinking water. And so, if you were to open an oil-capped well and put water, sand and fracking fluids into the well that uses a well stimulation process that breaks up the existing limestone, you might sink the ground into a sink hole !! Can a company actually create new sink holes in their endeavors to extract minerals from Florida? Well, that is what happened in a Tampa, FL suburb sinkhole because of Mosaic, the world's largest phosphate company as shown in the adjacent picture.

Please go to <http://www.csmonitor.com/USA/USA-Update/2014/0721/Sinkhole-in-Florida-In-Sinkhole-Alley-another-massive-one-swallows-a-street-video> . Let us now visualize, not a phosphate company, but oil companies who want to eventually use fracking / well stimulation processes to extract the remainder oil in trapped limestone as explained in **Alison Kelly's report, "[Oil Exploration in Florida](#)".**



As I sat in this summit, I was amazed at how we Floridians are so lucky to have this Florida aquifer. However, I could not help but wonder why anyone would even think of allowing well stimulation processes that use toxins like diesel fuel and arsenic to possibly pollute this aquifer.

And although this fracking / well stimulation process was stopped by a major force of people power in Naples, FL, as explained by Karen Dwyer of Stonecrab Alliance in her report, "[Oil Operations in Florida - What You Need to Know](#)", Hughes Oil Company still managed to proceed with a fracking / well stimulation process at Hogan Well 20H, 10 miles within Corkscrew Sanctuary. And just what happened to this waste water.... hmm?? They shipped the waste water in 4-6K gallon tankers -- about 35 of them.

Click here to view one of the [manifests](#) from Lehigh, Fl to Opa-Locka to a water-processing treatment plant which 6-9 months later could not account where the water was eventually deposited. It just goes to show you that the regulators in Florida do not have the safeguards in place to protect its citizens from such highly toxic waste water.

Unfortunately, this sin against humanity is about to occur again, only this time on 70,000 acres in Big Cypress. But there is hope since Burnett Oil Co. has not actually started the seismic testing. Jennifer Hecker, in her report, "[Advocacy](#)" makes a list of what we need to do which includes writing editorials to the newspaper, getting a county ordinance on the agenda and voting against well stimulation. To get the latest list of which cities and counties have the ordinance against fracking / well stimulation already done, click at [Karen Edelstein's map](#) known as the fractracker.org or click here to use the [alphabetical order](#). Next, download for template either a city: [well stimulation](#) or [well drilling](#) or county: [well stimulation](#) or [well drilling](#). In Palm Beach County, we are spear headed by Lorraine Zimmerman from the League of Women Voters and myself to get a county ordinance on the County Commission schedule. The last time I counted, there were only 12 counties out of 68 who had county ordinances in place. As a show of solidarity, we need all counties.

And members of Florida Federated Garden Clubs, one of the largest volunteer groups in Florida, can have a tremendous impact if everyone becomes actively involved. Fortunately, we have a very dedicated conservation group headed by Jackie Host, Pat Carver and Inger Jones. What is asked is that you immediately read and respond to emails that start with FL Fracking especially during legislation and sign up for **Action Alerts on Conservancy.org**.



To complete our list, we also need to solicit and receive the assistance of young college students. If you know them personally, why not email them a copy of this newsletter with a message that they have just as much to lose as we do should seismic mapping and later fracking / well stimulation begin in Big Cypress. Ask them to start their own social media / club and to join me at our Ban Fracking in Florida booth at South Florida Fair (email me at Diane@Banfrackinginfl.com.) Mind you, if we don't encourage everyone to work together to ban fracking / well stimulation in Florida, then we, as Floridians, could very well be the next endangered species as we watch our own habitat become riddled with added sink holes and fracked waste water.

(A special thanks goes to Meredith Barnard, Kim Ross, Barbara Hadsell and all others who have assisted me in the validity of this report.)

Picture above right courtesy of Karen Dwyer.

RECYCLING PROGRAMS

Here are some programs in which the club participates that don't cost you anything.

Start Saving "Labels for Education" from Campbell's and many other products as part of the "Labels for Education Program" that helps buy supplies for FFGC Wekiva Youth Camp.
Twig Morris collects the UPC labels

UPDATED NOTIFICATION "CAPS OF LOVE"

Kimberly Helms, our Around & About Chair, is coordinating with Royal Palm School for the donation of our Caps of Love. **Once again, please start bringing any collections of caps you have to our meetings, and she will deliver them for us.** Remember, **plastic only.....** no tin caps.

Wellington Garden Club Meetings

**Our garden club meetings are held at Wellington Community Center
12150 Forest Hill Blvd., Lakeview Room (Ground Floor), Wellington, FL
Guests are always welcome. If you plan to bring a guest please call Doreen Baxter,
Membership Chair, at 561-793-6013 or email doreenspot@comcast.net**

Newsletter

The *Allamanda News* is published five times a year. Please send your news, photos, tips, and advertising to Evvy Bartley at evvy35@comcast.net.

Deadline for Mar/Apr 2017 issue is Feb. 15, 2017.

Newsletter Editor: Evvy Bartley

Wellington Garden Club Officers

President	Kathy Siena
1 st Vice President	Carol Coleman
2 nd Vice President	Francine Strauss
Treasurer	Danese Sloan-Kendall
Assistant Treasurer	Silvia Evans
Corresponding Secretary	Bobbi Ziegler
Recording Secretary	Maria Wolfe
Parliamentarian	Stormi Bivin

Wellington Garden Club
1634 S. Club Drive
Wellington, FL 33414

